

Liability Exposure Review

California Insurance Pool Authority's (CIPA) Risk Management Requirements:

- Police Department's Administrative policies
- CIPA right to select & appoint defense counsel
- Arborist agreement
- Inspection of sidewalks
- Tree inspections
- Update policies related to liability

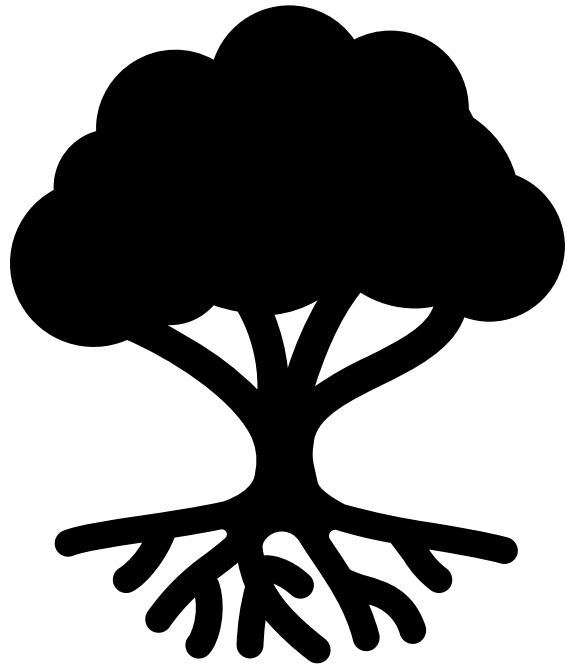
Parkway Tree Manual Considerations



1. Liability



2. Private Development



Liability

Last 10 years:

1,200 claims filed

- 53% related to trees
- Last 3 years, 60% related to trees

Incurred \$5.8M of liability expenses

- Ongoing costs
- Over 150 current open claims

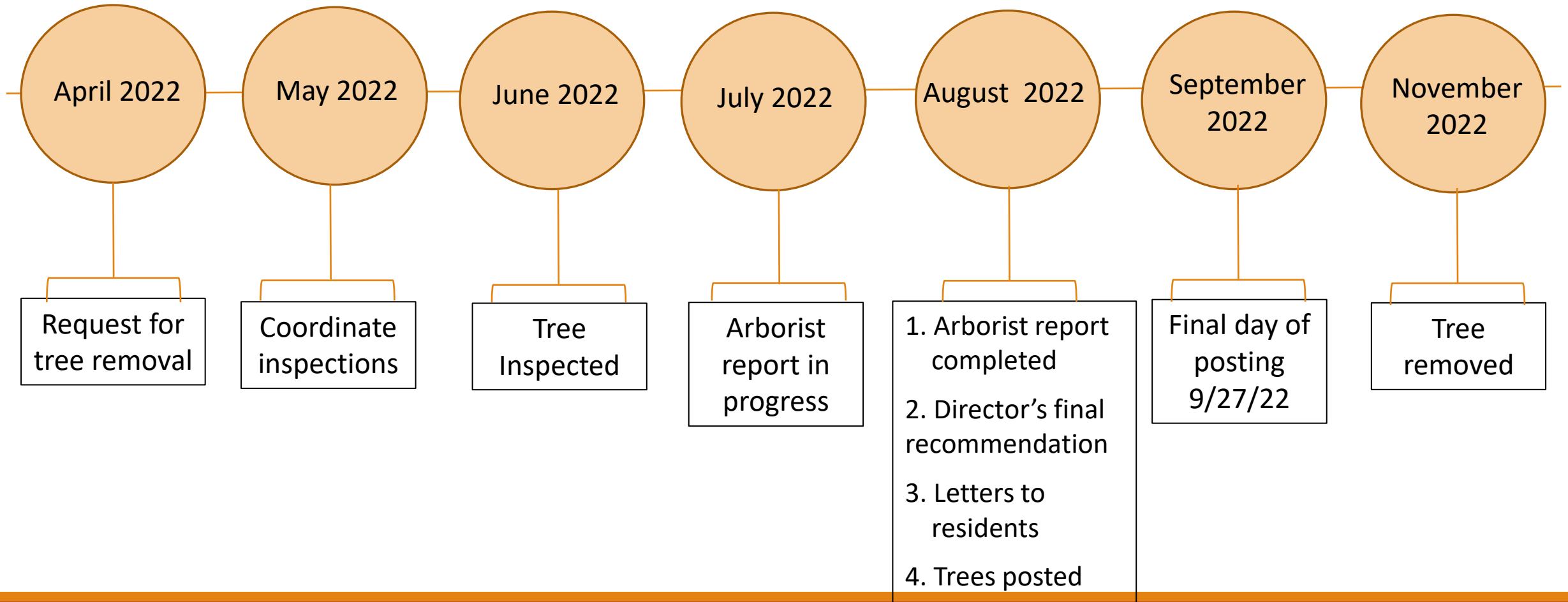
Claims

- Penn Park - \$28M
- Chavez - \$3M
- Traumatic brain injury claims

Liability

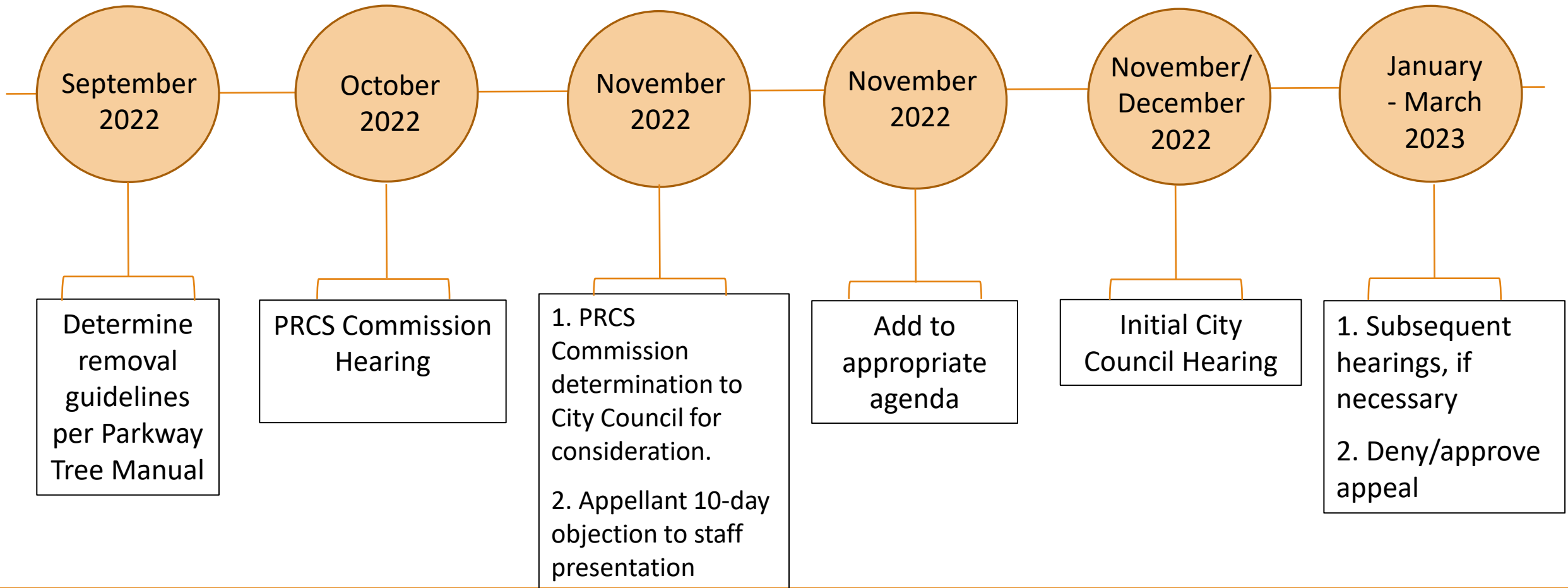


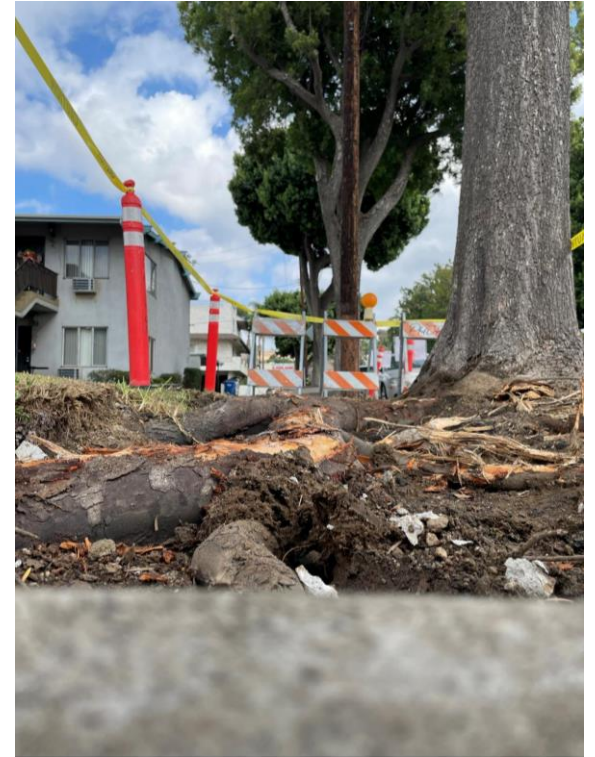
Liability



Liability

if appealed...





Liability

Private Development

Current process:

- Project approved by City Council
- Trees posted
- Appeal process begins
- Additional 9 months

