

**AGENDA  
CITY OF WHITTIER  
ART IN PUBLIC PLACES ADVISORY COMMITTEE  
SENIOR CENTER, 13225 WALNUT AVENUE  
OCTOBER 23, 2019, 4:30 PM**

**1. CALL TO ORDER**

**2. ROLL CALL**

Sandra Hahn, Chair  
Eric Martinez, Vice Chair  
Pamela Korporaal, Member  
Marilyn McCarty, Member  
Wes Murray, Member  
Peggy Rowe, Member

**3. PLEDGE OF ALLEGIANCE**

**4. PUBLIC COMMENTS**

The public is invited to address the Art in Public Places Committee regarding any item of business, with the exception of the public hearing items, or any matter within the body's subject matter jurisdiction. Speakers must limit their comments to three minutes. Pursuant to State law, the Committee cannot take action or express a consensus of approval or disapproval on any oral communications which do not appear on the printed agenda.

**5. STAFF REPORTS**

**5.A. Approval of Minutes**

Recommendation: Approve the Minutes of the Regular Meeting of September 25, 2019.

**5.B. The Groves in Whittier, Public Arts Program**

Recommendation: Review Brookfield Residential, Incorporated's proposed plan for The Groves in Whittier, public art installation and approval of a recommendation to the Cultural Arts Commission.

**6. SECRETARY COMMENTS**

**7. COMMITTEE MEMBER COMMENTS AND CONFERENCE REPORTS**

**8. ADJOURNMENT**

Disability-related services are available to enable persons with a disability to participate in this meeting, consistent with the Federal Americans with Disabilities Act of 1990. Spanish interpreters are also available. For information or to request services, please contact the Parks, Recreation and Community Services (PRCS) Department at least 24 hours in advance of the meeting at (562) 567-9400.

The agenda packet is available three days before the meeting in the PRCS Department at City Hall (13230 Penn Street), Whittier Central Library (7344 Washington Avenue) and East Whittier Branch Library (10537 Santa Gertrudes Avenue). Additionally, the agenda packet can be viewed on the City's website. Materials distributed to the Art and Public Places Advisory Committee within 72 hours of the Committee meeting are available for public inspection in the PRCS Department's Office.

Los servicios relacionados con la discapacidad están disponibles para permitir que las personas con discapacidad participen en esta reunión, de conformidad con la Ley Federal de Estadounidenses con Discapacidades de 1990. También hay intérpretes en español disponibles. Para obtener información o para solicitar servicios, comuníquese con el Departamento de Recreación y Parques al Servicio a la Comunidad al menos de 24 horas antes de la reunión al (562) 567-9400.

El paquete de la agenda está disponible tres días antes de la reunión con El Departamento de Recreación y Parques al Servicio a la Comunidad en el Ayuntamiento (13230 Penn Street) y Biblioteca Central de Whittier (7344 Washington Avenue) y Biblioteca sucursal del este de Whittier (10537 Santa Gertrudes Avenue). Además, el paquete de la agenda se puede ver en el sitio web de la Ciudad. Los materiales distribuidos al comité consultivo de arte en lugares públicos dentro de las 72 horas de la comité reunión están disponibles para inspección pública en la con El Departamento de Recreación y Parques al Servicio a la Comunidad.

I hereby certify under penalty of perjury, under the laws of the State of California that the foregoing agenda was posted in accordance with the applicable legal requirements. Regular and Adjourned Regular meeting agendas may be amended up to 72 hours in advance of the meeting. Dated this 18<sup>th</sup> day of October 2019.

/s/ Rosemary Serrano-Aiken

---

Rosemary Serrano-Aiken, Secretary



# Agenda Report

Arts in Public Places Advisory Committee

---

**Date:** October 23, 2019

**To:** Art in Public Places Advisory Committee

**From:** Greg Alaniz, Director of Parks, Recreation and Community Services

**Subject:** Approval of Minutes

## **RECOMMENDATION**

Approve the Minutes of the Regular Meeting of September 25, 2019.

## **BACKGROUND**

None

## **DISCUSSION**

Staff prepared draft minutes and hereby submits the minutes for Committee's approval.

## **FISCAL IMPACT**

There is no fiscal impact associated with this report.

## **ATTACHMENTS**

A. Minutes of the Regular Meeting of September 25, 2019.

**MINUTES  
ART IN PUBLIC PLACES ADVISORY COMMITTEE  
REGULAR MEETING  
WHITTIER SENIOR CENTER  
13225 WALNUT STREET  
WEDNESDAY, SEPTEMBER 25, 2019 – 4:30 P.M.**

**1. CALL TO ORDER:**

The Art in Public Places (AIPP) Advisory Committee met in Regular Session at the Whittier Senior Center, 13225 Walnut Street, Whittier, California. Chair Hahn called the meeting to order at 4:33 p.m.

**2. ROLL CALL:**

**COMMITTEE MEMBERS  
PRESENT:**

Sandra Hahn, Chair  
Eric Martinez, Vice Chair  
Pamela Korporaal  
Marilyn McCarty  
Wes Murray

**COMMITTEE MEMBERS  
ABSENT:**

Alberto Montes de Oca  
Peggy Rowe

**OTHER OFFICIALS  
PRESENT:**

Greg Alaniz, Director of Parks, Recreation and  
Community Services  
Virginia Santana, Community Services Manager  
Rosemary Serrano-Aiken, Secretary

**3. PLEDGE OF ALLEGIANCE:**

Member Korporaal led the Pledge of Allegiance to the United States flag.

**4. PUBLIC COMMENTS:**

Liz Apodaca, a lawyer in Whittier representing the Friends of Uptown introduced herself to the AIPP Advisory Committee.

Frank Medina, a local business owner and Mario Lopez, an artist, both with the Uptown Association passed out folders regarding the potential Uptown Whittier Mural Project by artist Sergio Robleto. The Uptown Association would like the AIPP Advisory Committee to consider the mural depicting oranges, be painted on the Uptown parking structure at a cost of \$18,000; they requested a donation of \$10,000.

Secretary Alaniz explained the AIPP Master Plan process regarding City Council approved eligible sites for artwork/art pieces.



**5. STAFF REPORTS:**

**5.A. Approval of Minutes**

It was moved by Member Murray, seconded by Vice Chair Martinez, and carried 5 – 0 (absent: Members Montes de Oca and Rowe) to approve the Minutes of the Regular Meeting of May 22, 2019.

**5.B. Welcome Home Vietnam Veterans Memorial – Honoring Jose Ramos**

Secretary Alaniz presented a 3-D rendering by artist, Wayne Healy. He stated that two City Council Members suggested placing the art piece at Central Park. He added that the area inside Central Park, on the northeast corner, near Park Street and Friends Avenue as a possible location. He distributed photos of an aerial view of Central Park and two close-up photos of the location mentioned.

Chair Hahn stated this is history being made with the John Greenleaf Whittier statue already placed at the park and now with the Vietnam Veterans Memorial. She added that since the art piece will have no platform, it will only be four (4) feet high; also, perhaps add some lighting.

Member McCarty indicated that Mrs. Ramos and Mr. Lugo suggested using photos of Jose Ramos to make the art piece images more accurate. Secretary Alaniz said he has received the photos and he and Ms. Santana will be working with the artist regarding this suggestion.

Member Murray suggested that the images on the art piece be reversed, with the five (5) branches of the military being placed down below. He also mentioned the possibility of skateboarders trying to jump on top of the art piece. Secretary Alaniz commented that so far the City's art has been respected. Member Murray also suggested a grass area or astro turf be placed near the art piece to stop skateboarder's momentum. Member McCarty suggested perhaps using decomposed granite (DG).

Member Korporaal agreed that the images on the art piece be reversed with the side depicting the medic, face the outside the park.

Vice Chair Martinez commented that the side of the rendering with the bicycle is more fluid than the back side with the medic; it needs to be less boxy. Chair Hahn agreed and suggested the side with the medic blend in more by removing the boxiness.

It was moved by Member Murray, seconded by Member Korporaal, and carried 5 – 0 (absent: Members Montes de Oca and Rowe) to approve the Welcome Home Vietnam Veteran Memorial – Honoring Jose Ramos be placed in the northeast corner at Central Park, on the Park Street side and the artist be consulted to reverse the images on the art piece and incorporate other suggestions by the Committee.

**6. SECRETARY COMMENTS:**

Secretary Alaniz advised the Committee on the upcoming events:

- Fire Fighter Tribute donated by the Whittier Community Foundation has the unveiling on Thursday, October 3, 2019 at LA County Fire Department, Station 28 @ 10:30 a.m.
- State of the Homeless Annual Meeting will be held Saturday, October 19, 2019 from 8:00 a.m. – 1:00 p.m. at Parnell Park Community Center.
- Oak Station Ribbon Cutting is Monday, October 21, 2019 at 3:00 p.m. at the Greenway Trail Mills East Extension on Mills Avenue and Lambert Road.
- Spooktacular 5K is Saturday, October 26, 2019.
- Tom Herrera, Park Maintenance Supervisor saved a man's life by administering CPR at Leffingwell Ranch Park last Thursday. He called 911; Whittier Police and paramedics arrived on the scene.

Ms. Santana had the following comments:

- Updated photos of the "Solar Tree" art piece were distributed. The canopy, eye, and three pillars are completed. The tiles should be ready this week to pick-up and insert. There will need to be a timeline created to prep the site with hopes for a November or December 2019 installation. She will email the photos to Committee Members.
- York Field's Request for Proposal (RFP) will go out Friday. The Cultural Arts Commission (CAC) increased the amount for the art project to \$200,000 and approved the RFP. It will be exciting to see what the proposals the artists come up with. Looks like mid-November for the RFPs to come in. With the holidays coming up, the RFP review process may not be until January 2020. Vice Chair Martinez asked for digital copies of the RFP proposals, once they come in.

**7. COMMITTEE MEMBER COMMENTS AND CONFERENCE REPORTS:**

- Member McCarty distributed flyers for the 10<sup>th</sup> Annual Harmony Center Fine Art and Craft Fair to be held on October 19 – 20, 2019 from 9:00 a.m. – 4:00 p.m. @ Comstock Avenue and Bailey Street in Uptown Whittier.
- Chair Hahn suggested a coffee get-together with AIPP Advisory Committee Members and the CAC Commissioners. Ms. Santana reminded all present that no Committee or Commission business can be discussed during these get-togethers due to the Brown Act.
- Chair Hahn asked if other areas in Uptown can be identified for art piece sites. Secretary Alaniz replied he will have a conversation with Administration regarding this topic. Chair Hahn added, it is wonderful to give artists an opportunity to be part of the City of Whittier's history. There are so many artists in Whittier, she hopes there will no longer be catalog art purchased. Secretary Alaniz explained the decision to purchase the catalog art was due to the low amount of funds at that time; they wanted to get as much art as possible for their money in order to spread out more art pieces throughout the Uptown area.

**8. ADJOURNMENT:**

Chair Hahn adjourned the meeting at 5:39 p.m.

**9. NEXT MEETING:**

Wednesday, October 23, 2019

Approved and adopted by the Art in Public Places Advisory Committee on September 25, 2019.

---

GREG ALANIZ,

Director of Parks, Recreation and Community Services



# Agenda Report

Arts in Public Places Advisory Committee

---

**Date:** October 23, 2019

**To:** Art in Public Places Advisory Committee

**From:** Greg Alaniz, Director of Parks, Recreation and Community Services

**Subject:** The Groves in Whittier, Public Arts Program

## **RECOMMENDATION**

Review Brookfield Residential, Incorporated's proposed plan for The Groves in Whittier, public art installation and approval of a recommendation to the Cultural Arts Commission.

## **BACKGROUND**

As required per the Art in Public Places Ordinance (Chapter 12.52 of the Whittier Municipal Code), Brookfield Residential, Incorporated (Brookfield), the developers of The Groves in Whittier (The Groves), a new community development project, are required to acquire or install artwork on the project development site or contribute funds in-lieu of acquiring and installing artwork equal to one half of one percent of the total project cost.

## **DISCUSSION**

Brookfield opted to curate artwork for The Groves and has been working for the past year to develop a comprehensive public arts program. The program has been developed to satisfy the requirements of Mitigation Measure CUL-3.E.3 of the Lincoln Specific Plan Final EIR. This measure requires that the project developer, in consultation with the City, shall implement a public art program throughout the site.

- May include murals, sculptures, fountains, and other permanent art installations.
- Scope of the program shall be determined by the City.
- Shall interpret the history of the site and relevant themes.
- Artwork shall be created by qualified artists with demonstrated public art experience.
- Shall be approved by the City.
- Shall be created and implemented as part of the overall construction schedule for the project, prior to the opening of the site to the public.

The Groves, Public Arts Program is estimated to cost approximately \$1,048,000.00. This cost includes the art elements, as well as associated landscaping, lighting, etc. The individual breakdown for each element is as follows:

Art Pavilions at Heritage Court	\$170,000
Heritage Trail and Historical Trail Markers	\$475,000
Mockingbird Tree at the Commons	\$239,000
Poets Park	\$159,000
 Total	 \$1,043,000

Brookfield has completed a comprehensive plan for The Groves site, met the outlined requirements, and submitted the proposed plan for various art installations to be placed throughout the site. The Art in Public Places Ordinance (Chapter 12.52 of the Whittier Municipal Code), requirement of meeting the one-half of one percent of the total cost of The Groves new community development project is pending completion of the value assessment.

**FISCAL IMPACT**

There is no fiscal impact associated with this report.

**ATTACHMENTS**

- Attachment A – The Groves Public Arts Program letter
- Attachment B – The Groves Public Arts Program proposal

October 15, 2019

Mr. Greg Alaniz  
Director of Parks, Recreation and Community Services  
City of Whittier  
13230 Penn Street  
Whittier, CA 90602

RE: The Groves in Whittier, Public Arts Program

Dear Greg:

We are pleased to present The Groves in Whittier Public Arts Program. As you are aware, we have worked with you and a select group of Whittier stakeholders for the past year or so to develop a comprehensive public arts program for The Groves, culminating in the program described below. Our public arts program has been developed to satisfy the requirements of Mitigation Measure CUL-3.E.3 of the Lincoln Specific Plan Final EIR. This measure requires that:

*Project developer, in consultation with the City, shall implement a public art program throughout the site.*

- a) May include murals, sculptures, fountains, and other permanent art installations.*
- b) Scope of the program shall be determined by the City.*
- c) Shall interpret the history of the site and relevant themes.*
- d) Artwork shall be created by qualified artists with demonstrated public art experience.*
- e) Shall be approved by the City.*
- f) Shall be created and implemented as part of the overall construction schedule for the project, prior to the opening of the site to the public.*

The various elements of the art program are found moving through the Heritage Trail, an enhanced walking path that leads pedestrians through the entire Groves community. Beginning at Whittier Boulevard, the pedestrian will encounter:

- 1) Art Pavilions at Heritage Court
- 2) Heritage Trail – Historical Trail Markers
- 3) Mockingbird Tree at the Commons
- 4) Poets Park



Following is a description of each of these installations:

#### Art Pavilions at Heritage Court

The Groves Art Pavilions are designed to become immersive and functional sculpture. A series of sculptural steel walls support a roof structure to create a useable interior space surrounded by sculpture – a sculpture that can be viewed from inside and out. The sculptural walls use historic photographs to depict, through a halftone process, historic images of the Nelles site and historic groves of Whittier. The halftone perforations create a transparency that add to the sculptures aesthetic appeal while also cooling the interior space and providing visibility into the pavilion interior. The perforations are oriented towards the street to provide maximum visibility of the sculpture and its interior. At night, interior lighting will take advantage of the perforations and not just illuminate the interior; but also, cast the panel's pattern on the adjacent paving, buildings, and tree canopies. Within the interior space highly refined furnishings are proposed to act in coordination with the exterior dining court.

Safety and visibility were considered in the design of the sculptures. The perforations in the metal walls and openings in the wood walls allow interior inhabitants to be seen from the exterior and to be easily policed from the surrounding streets and parking lots. Furthermore, the furnishings in the interior will be designed to discourage sleeping and vagrancy.

The tmec painted steel and tropical hardwood construction ensure a sculpture that will have a long life expectancy and low maintenance.

The pavilions are to be installed with the construction of Heritage Court tentatively scheduled to open in the summer of 2021. The metal halftone panels and sculptural components will be fabricated offsite and assembled, under the supervision of the artist, with the sculptural wood components at the sculpture's permanent location. Once assembled the sculpture's metal components will receive their protective coating.

#### Heritage Trail – Historical Trail Markers

Heritage Trail is a 10-foot wide, 4,030-foot long enhanced, lighted walkway that connects the Groves to the surrounding neighborhood to the north, east and west. It is located along key roadways within the Groves, meandering by the Commons and the Plunge. Circular rest stops are located at focal intersections providing wood bench seating and shade from specimen trees.

A total of 7 informational markers are located along the trail. Each marker is approximately 6 feet all, and is finished with brick to match the brick character of many of the buildings from the Fred C. Nelles era (including 3 of the retained buildings), with a concrete pre-cast cap. They are inset with colorful signage addressing the history of the site and the following themes: general site history, the work of Fred C. Nelles, unique rehabilitation programs, education/job training, athletics, agriculture, architecture, and the role of the site within the history of Whittier.

Heritage Trail and the Historical Trail Markers will be constructed in early 2020, prior to the opening of the site to the public.

### Mockingbird Tree at the Commons

The Mockingbird Tree celebrates the tree as a natural resource, and is composed from contemporary materials that are consistent with permanent public art. It thoughtfully integrates the sculpture into the environment of The Groves, and creates a playful image that engages the public imagination. Measuring 18' by 12' by 7', the stainless steel tree form holds a strong, universally appealing visual presence. The surface of the stainless steel will have a brushed finish. To tie into the citrus grove history of the site, the limbs' seven spheres will contain six cast bronze oranges and one Mockingbird finished in 23-karat gold leaf.

The Mockingbird Tree will be installed in front of the Commons, one of the retained and rehabilitated buildings from the Fred C. Nelles era on site, reimagined as an 11,000 sf community center.

The Commons is prominently surrounded by a large open lawn and mature specimen trees such as Jacarandas, a focal Camphor tree, and mature Pine tree. Heritage trees have been preserved throughout the construction process and they offer a sense of permanence and maturity to the surroundings.

As the visitor approaches the Commons from the road, the sightlines open up to reveal a ground plane of geometric turf squares reminiscent of a formal parterre garden, but crafted in modern form. Surrounding the focal gathering space is a grove of field grown olives planted in an expanse of decomposed granite. Additionally, (8) seat benches offer a place to rest and contemplate the historic nature of the surroundings. Central to the space is a large square planter surrounded by a low formal Boxwood hedge and filled with white roses. It accommodates an historic salvaged corner stone monument in the front, two historic salvaged stone benches on the sides, and in the middle the Mockingbird tree sculpture. Overall, this outdoor space will be a noteworthy stop along the Heritage Trail network and will draw interest from residents and visitors for many more years to come.

Installation would occur in February-March, 2020, prior to the opening of the site to the public.

### Poets Park

As pedestrians continue along Heritage Trail, they will encounter Poets Park, an approximately 10,000 square foot park celebrating the Fireside Poets. The park will include an informational plaque introducing park patrons to the Fireside Poets, including Whittier's namesake, John Greenleaf Whittier. Inset in the enhanced walkway are inspirational quotes from Oliver Wendell Homes, Sr., Henry Wadsworth Longfellow, William C. Bryant, James Russell Lowell, Ralph Waldo Emerson, and John Greenleaf Whittier. Thoughtfully placed seat walls along the walk offer places to rest and observe the restorative planting of olive tree groves, roses and grasses. Soft lighting helps facilitate the park's romantic mood while also providing security.

Poets Park would be constructed contemporaneously with the nearby Plunge, a community pool.



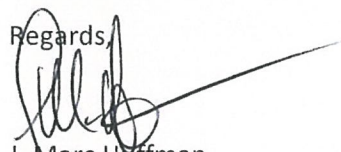
Cost Estimate

The Groves Public Arts Program is estimated to cost approximately \$1,048,000. This cost includes the art elements, as well as associated landscaping, lighting, etc. The individual breakdown for each element is as follows:

Art Pavilions at Heritage Court	\$	170,000
Heritage Trail and Historical Trail Markers	\$	475,000
Mockingbird Tree at the Commons	\$	239,000
Poets Park	\$	159,000
Total	\$	1,043,000

We look forward to discussing this program with you further and working with the City to finalize and implement it. Please contact me if you have any questions or need further information.

Regards,



J. Marc Huffman

Vice President, Planning & Entitlements



**T H E  
G R O  
V E S**

A T W H I T T I E R







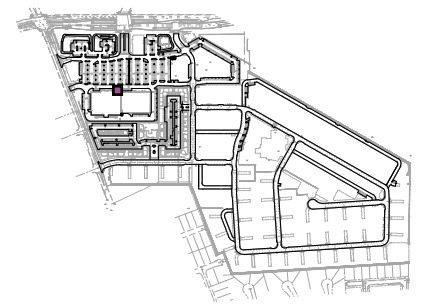


01  
the groves  
architectural elements

Clock Tower



Key Plan



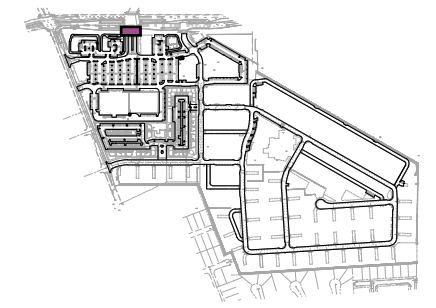


# 01 the groves marketplace

## Entry Monuments



Key Plan





# 02 the groves marketplace

## Art Pavilions

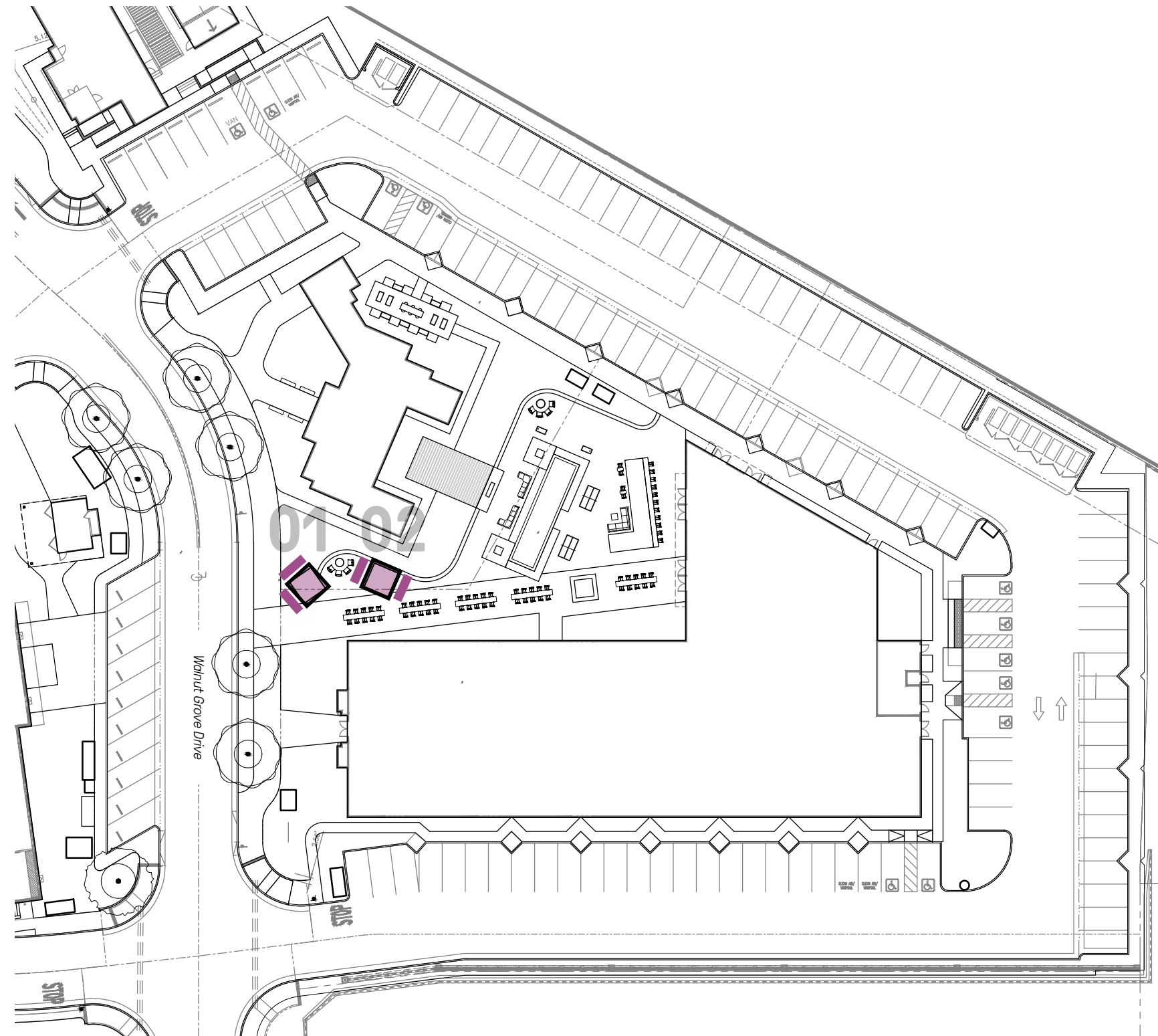
The groves pavilions are designed to become immersive and functional sculpture. A series of sculptural steel walls support a roof structure to create a useable interior space surrounded by sculpture – a sculpture that can be viewed from inside and out. The sculptural walls use historic photographs to depict, through a halftone process, historic images of the Nelles site and historic groves of Whittier. The halftone perforations create a transparency that add to the sculptures aesthetic appeal while also cooling the interior space and providing visibility into the pavilion interior. The perforations are oriented towards the street to provide maximum visibility of the sculpture and its interior. At night, interior lighting will take advantage of the perforations and not just illuminate the interior; but also, cast the panel's pattern on the adjacent paving, buildings, and tree canopies. Within the interior space highly refined furnishings are proposed to act in coordination with the exterior dining court.

### Legend

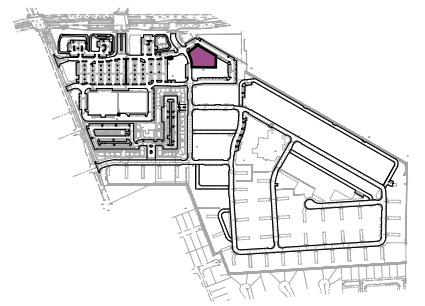
 Art Panels



0 25' 50'

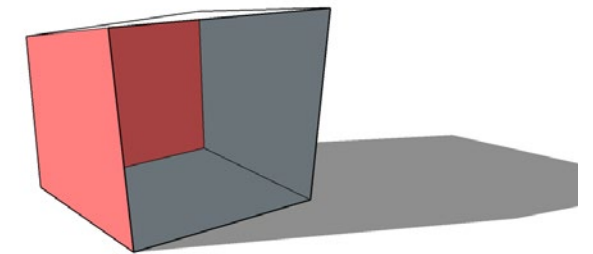


Key Plan



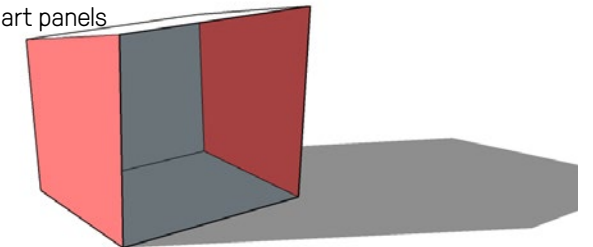
Pavilion 1

2 panels



Pavilion 2

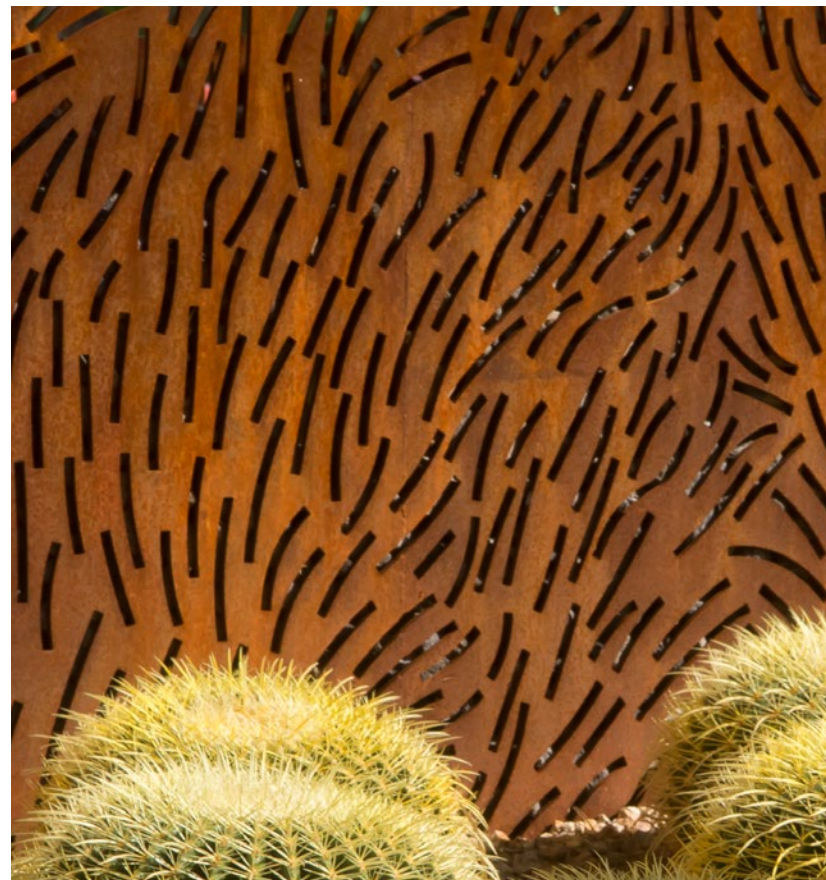
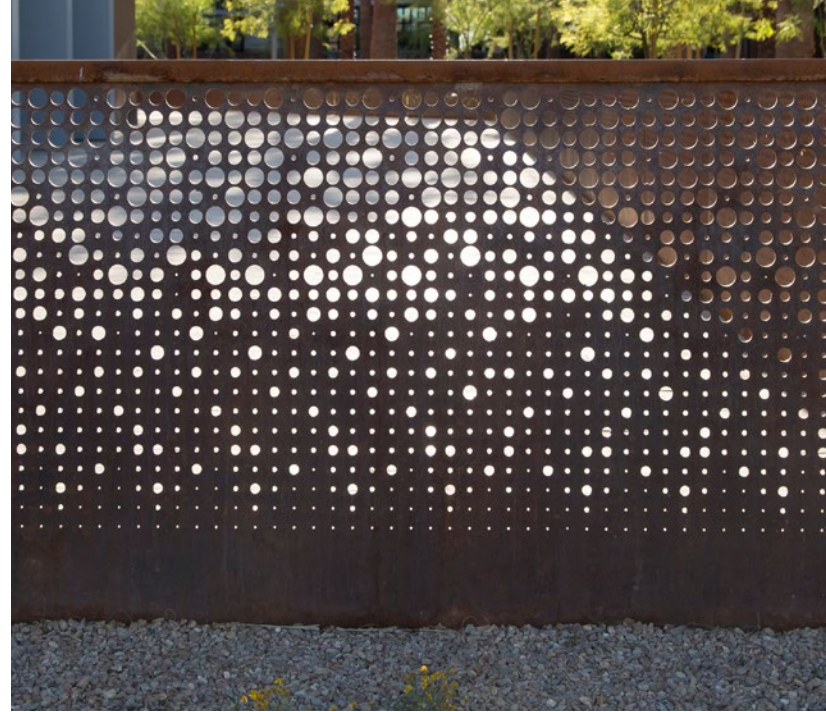
2 art panels





# Art Pavilions

Concept Imagery

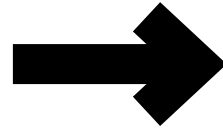




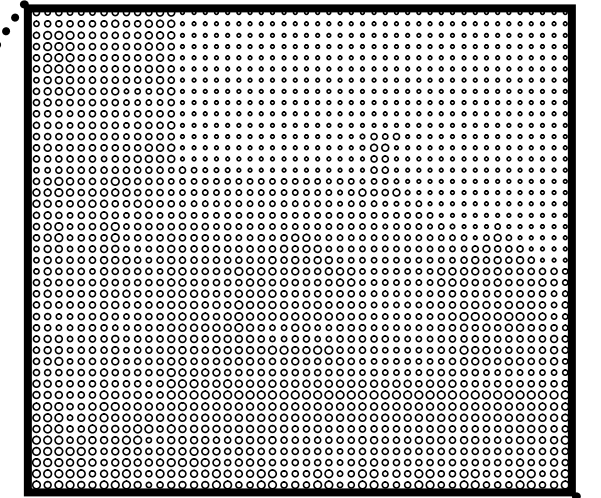
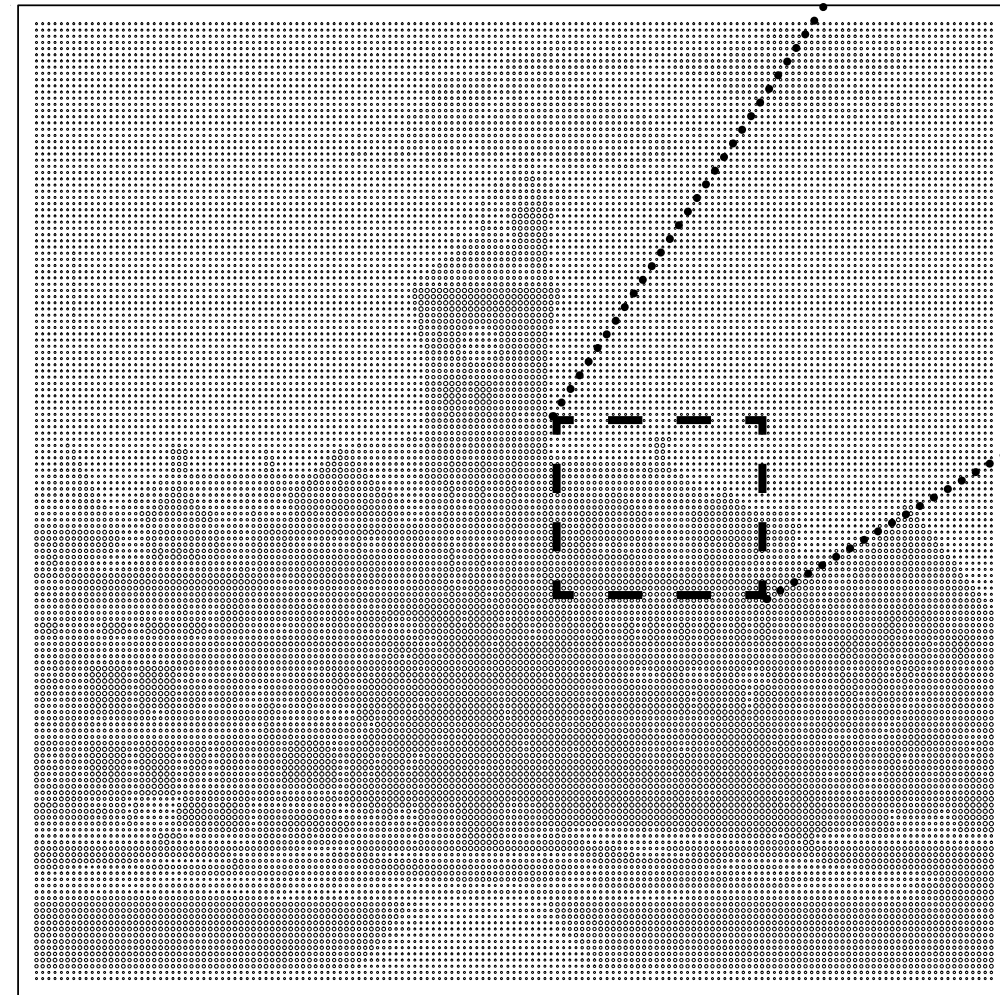
# Overview

Half-Tone Concept

Image

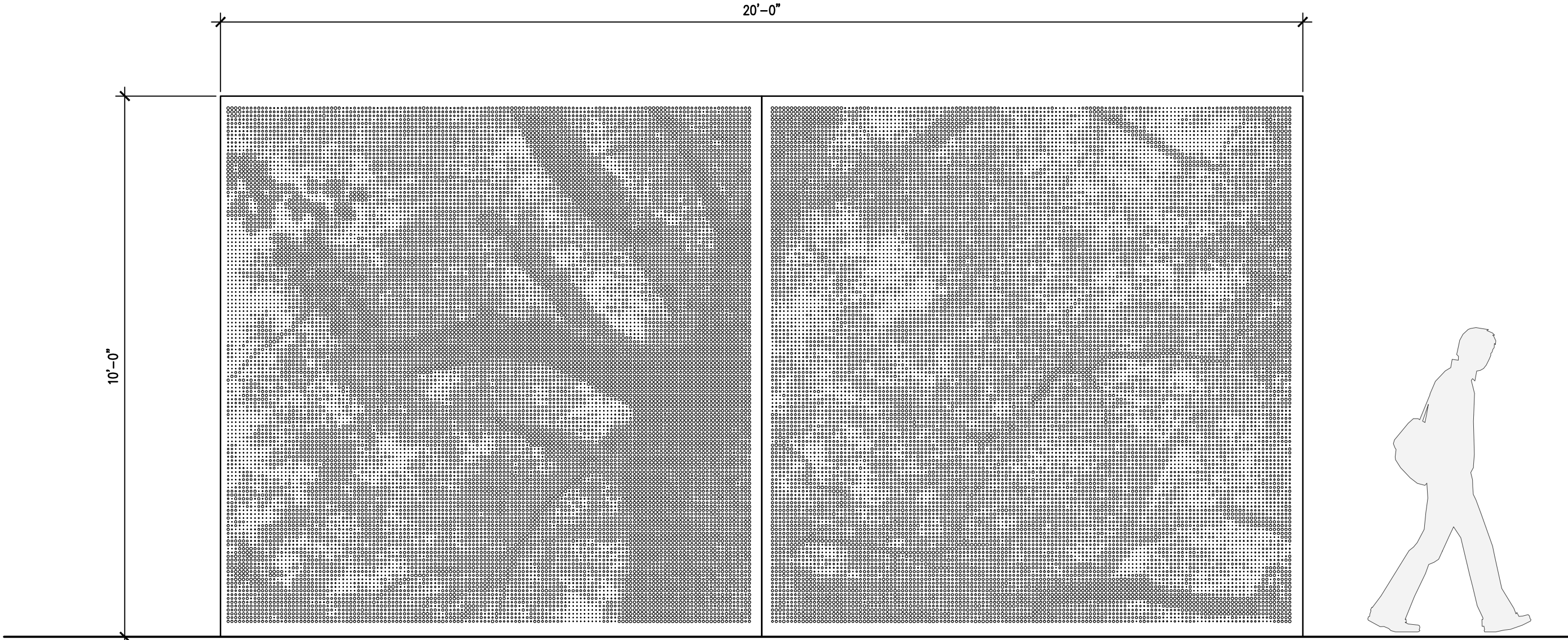


Halftone



# Art Pavilion

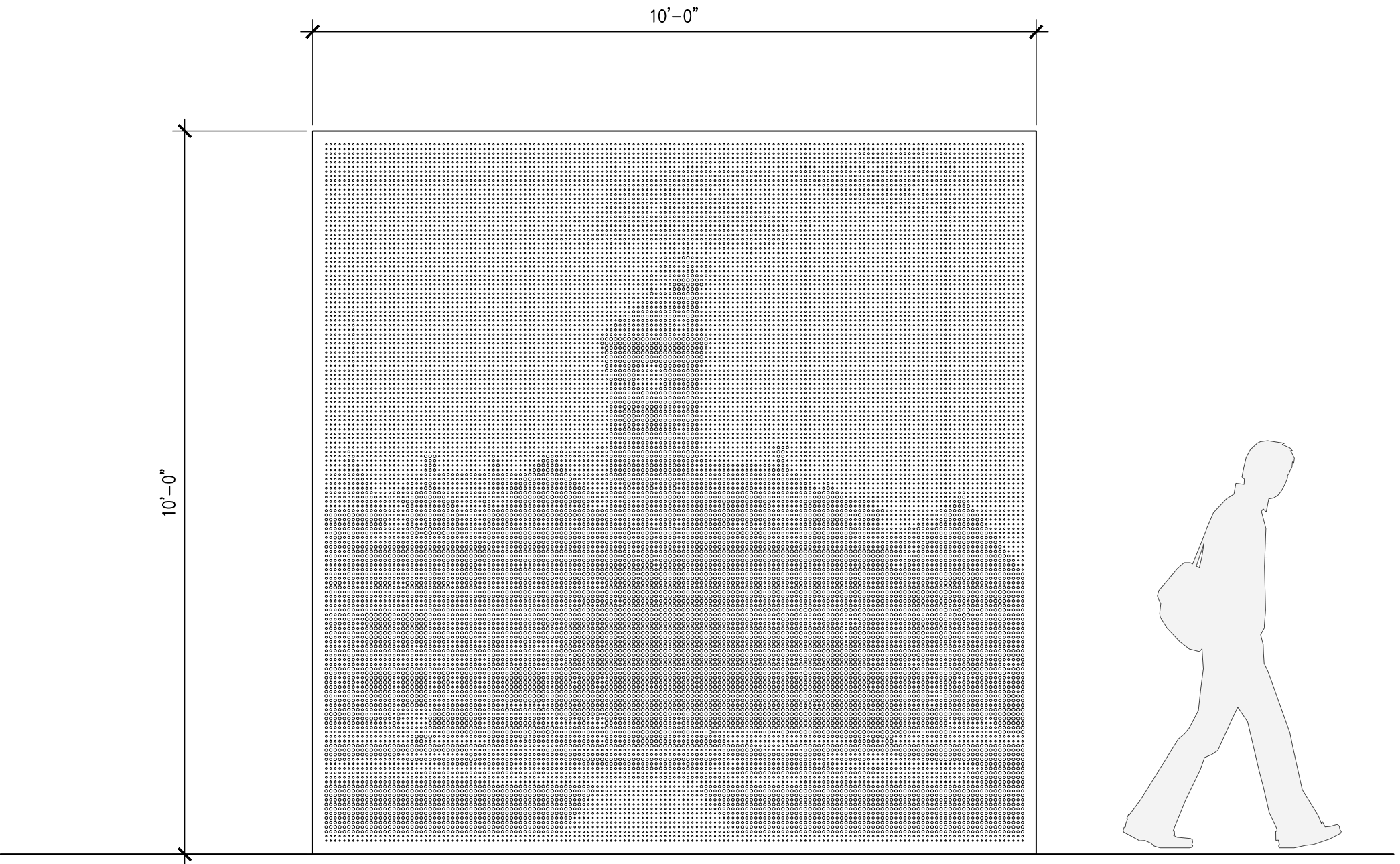
Option 1 | Walnut Tree





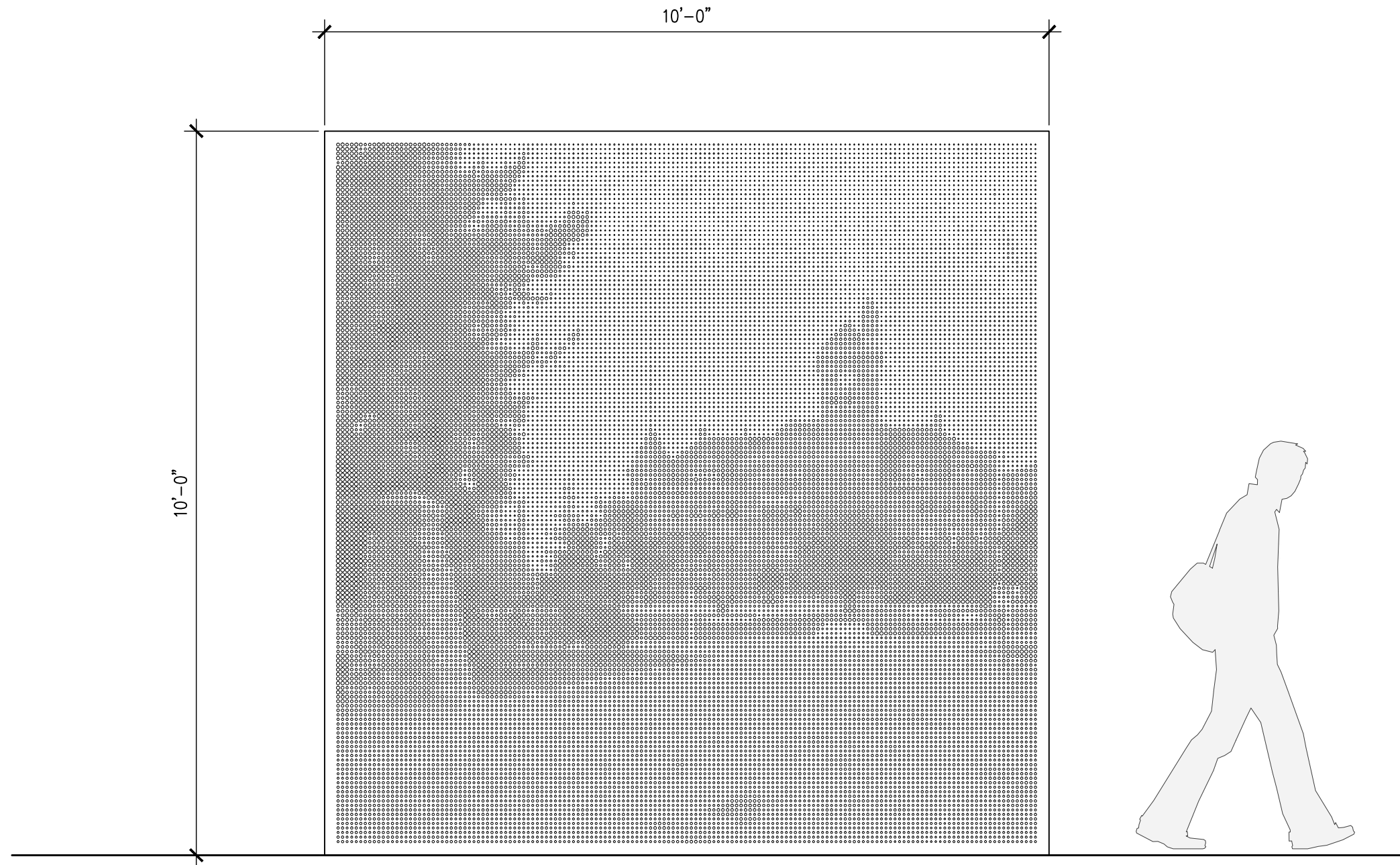
# Art Pavilion

Option 2 | Original Castle Building



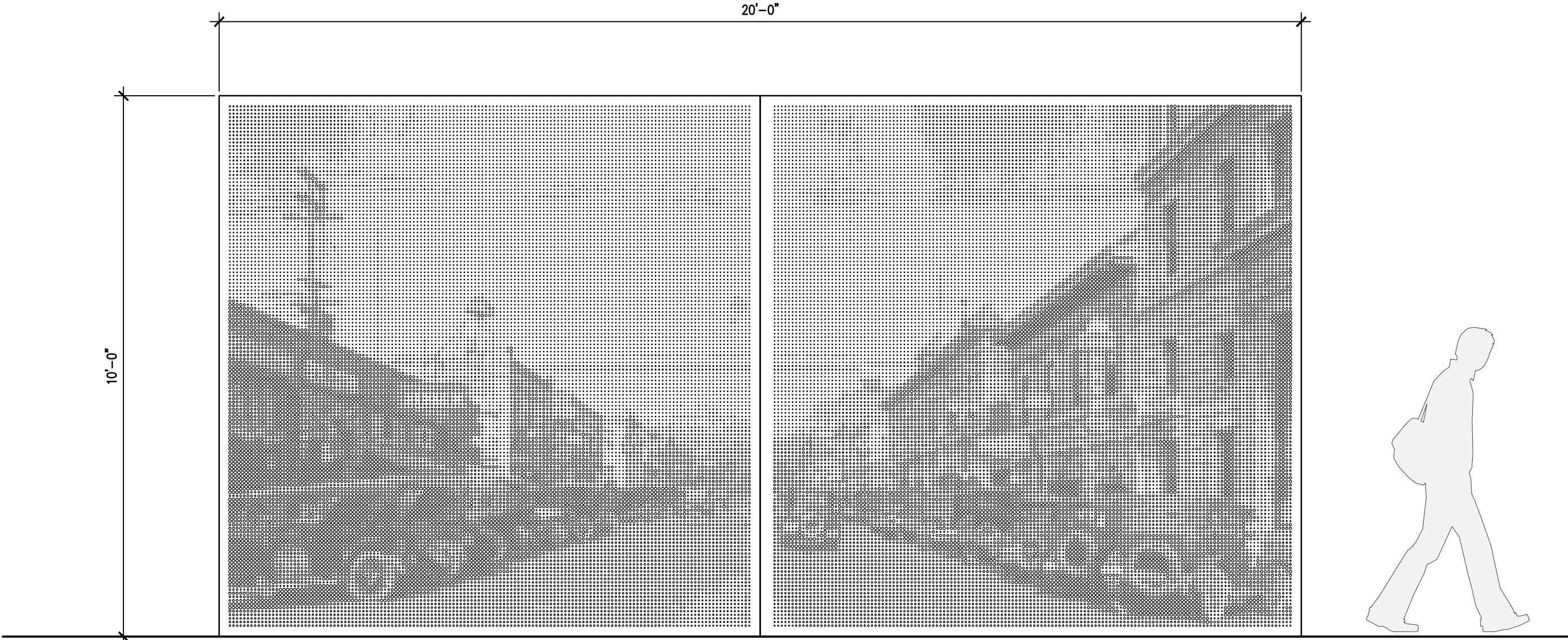
# Art Pavilion

Option 3 | Original Castle Building



# Art Pavilion

Option 4 | Historic Downtown Whittier





# Art Pavilion

Community Table | Option 1



Perforated Metal Art Panels

2x6 Wood Ribs and Overhead Trellis

LED Light Stripes

Wood Stool

Wood Community Table

Wood Banquet Seat

## Lounge Furnishing

**Pavilion:** Wood ribs with metal art panels

**Furnishing:** Wood community table with wood banquet and stool seats



# Art Pavilion

Community Dining | Option 2



Perforated Metal Art Panels

2x6 Wood Ribs and Overhead Trellis

LED Light Stripes

Cacoon Hanging Chair

Wood Cafe Table

Wood Seat Bench

## Lounge Furnishing

**Pavilion:** Wood ribs with metal art panels

**Furnishing:** Wood cafe tables with wood seat bench and Cacoon hanging seats



# Art Pavilion

Lounge Furnishing | Option 1



Perforated Metal Art Panels

2x6 Wood Ribs and Overhead Trellis

LED Light Stripes

Wood Ottoman

Wood L-Shaped Couch

## Lounge Furnishing

**Pavilion:** Wood ribs with metal art panels

**Furnishing:** Wood L-Shaped couch and wood ottoman



# Art Pavilion

Lounge Seatwall | Option 2



Perforated Metal Art Panels

2x6 Wood Ribs and Overhead Trellis

LED Light Stripes

Cacoon Hanging Chair

Wood Cafe Table

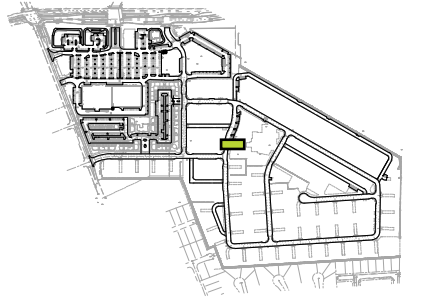
Wood Terraced Seat Wall

## Seat Wall Lounge Furnishing

**Pavilion:** Wood ribs with metal art panels

**Furnishing:** Wood terraced seat structure with wood cafe tables and a Cacoon hanging chairs



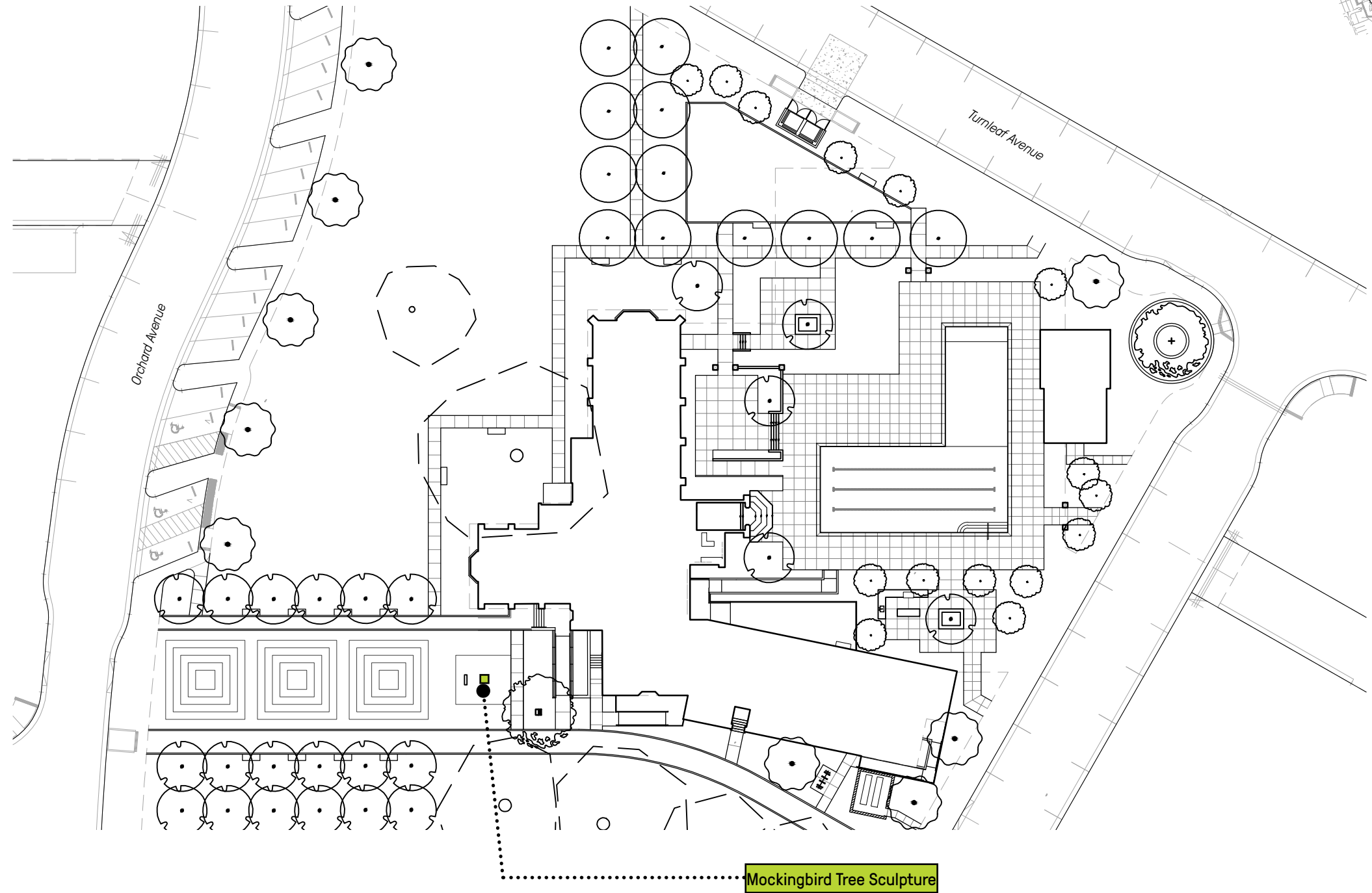


# the groves

The Commons

## Mockingbird Tree Sculpture

Located at the terminus of the formal entry, the Mockingbird Tree is envisioned to celebrate the Groves' agricultural history.



0 25' 50'



# Mockingbird Tree Sculpture

Day-Time Perspective





# Mockingbird Tree Sculpture

Night-Time Perspective

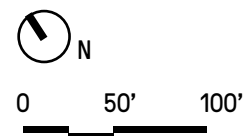
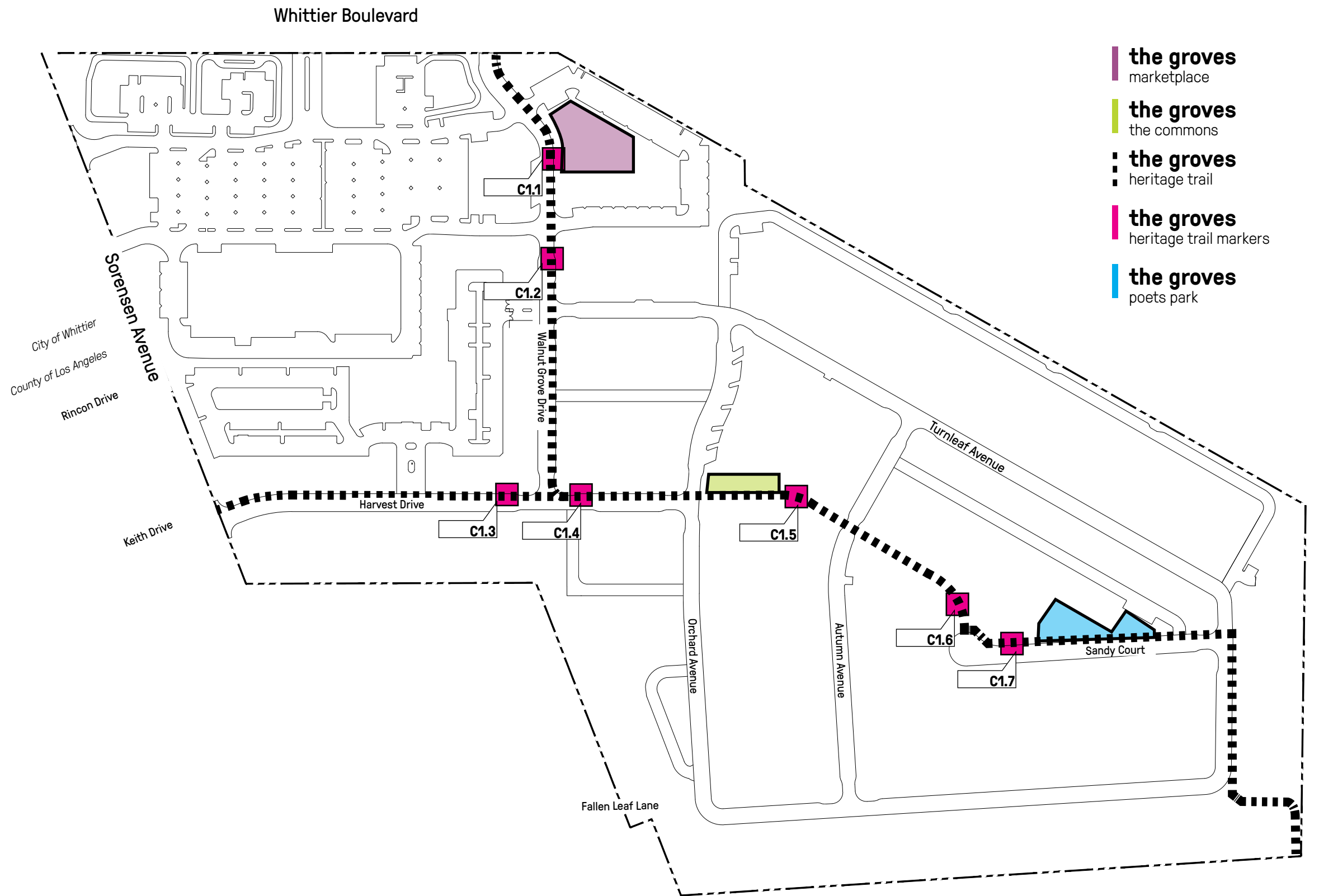




# 04 the groves Heritage Trail

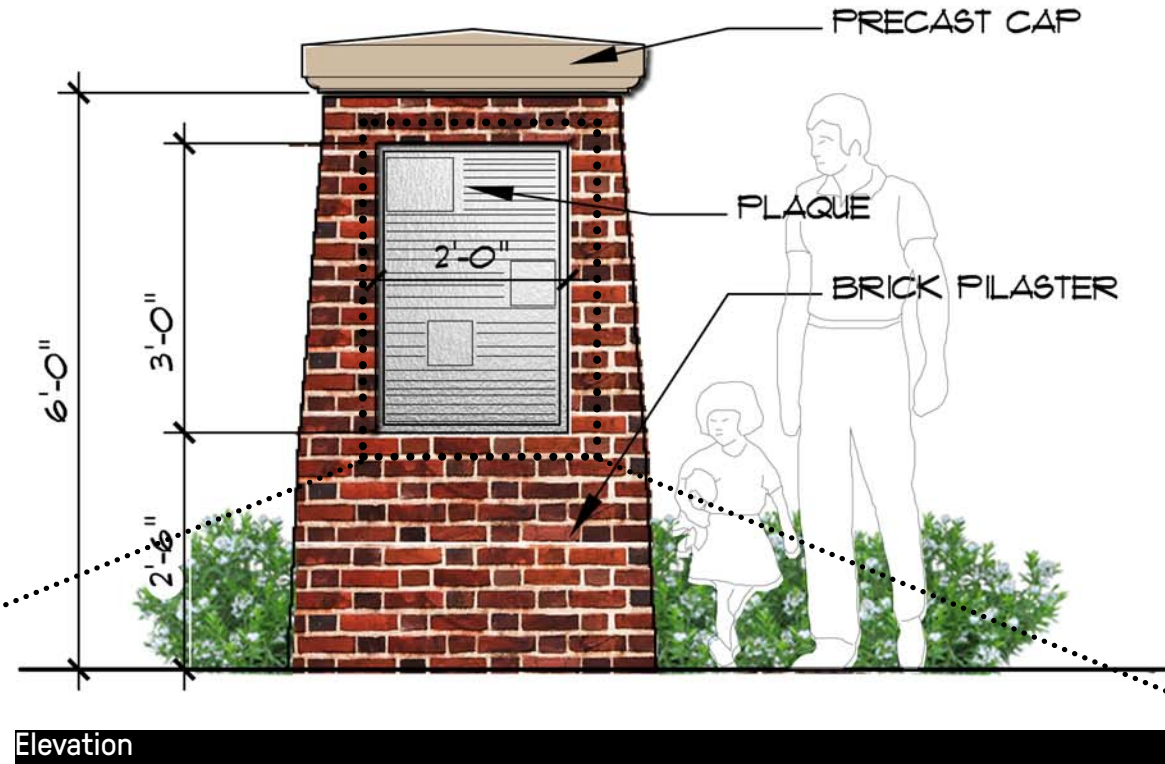
## Heritage Trail Markers

A collection of historic narratives that depict the story of The Fred C. Nelles School for Boys along with the origins of the City of Whittier. Each plaque is envisioned to present a unique quality and creates a series of curated moments along the Heritage Trailway.



# Heritage Trail Markers

Detail and Enlargements



### A Look Back in Time

THE GROVES

For more information, please visit [www.frednelles.com](http://www.frednelles.com)

**C1.1**

### Recreation and Life Lessons

THE GROVES

For more information, please visit [www.frednelles.com](http://www.frednelles.com)

**C1.2**

### Learning a Trade

THE GROVES

For more information, please visit [www.frednelles.com](http://www.frednelles.com)

**C1.3**

### Fred C. Nelles

THE GROVES

For more information, please visit [www.frednelles.com](http://www.frednelles.com)

**C1.4**

### Architecture and Reform

THE GROVES

For more information, please visit [www.frednelles.com](http://www.frednelles.com)

**C1.5**

### Agriculture and Reform

THE GROVES

For more information, please visit [www.frednelles.com](http://www.frednelles.com)

**C1.6**

### Whittier's Beginnings

THE GROVES

For more information, please visit [www.frednelles.com](http://www.frednelles.com)

**C1.7**



# 05

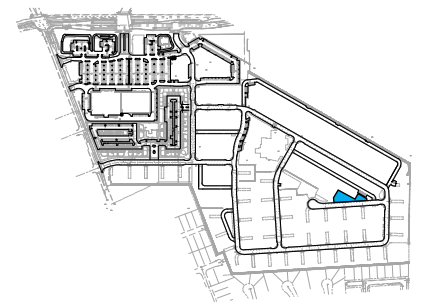
## the groves

poets park

### The Fireside Poets

A collection of short poems from influential Whittier poets, also known as the “schoolroom” or “household” poets, including most notably John Greenleaf Whittier from which the Tower of Whittier was named after.

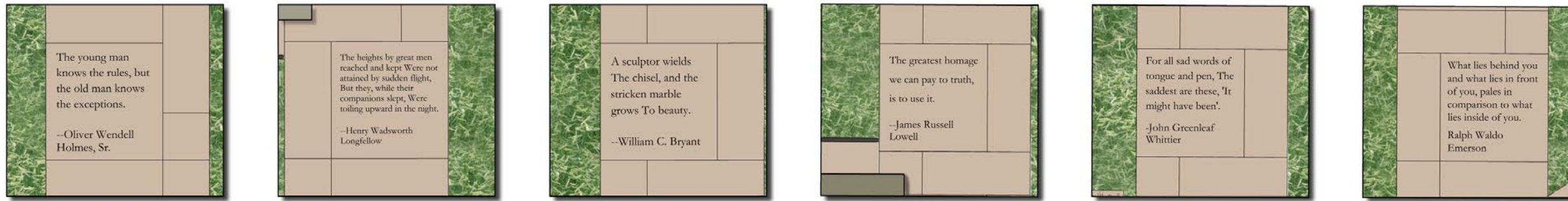
Key Plan



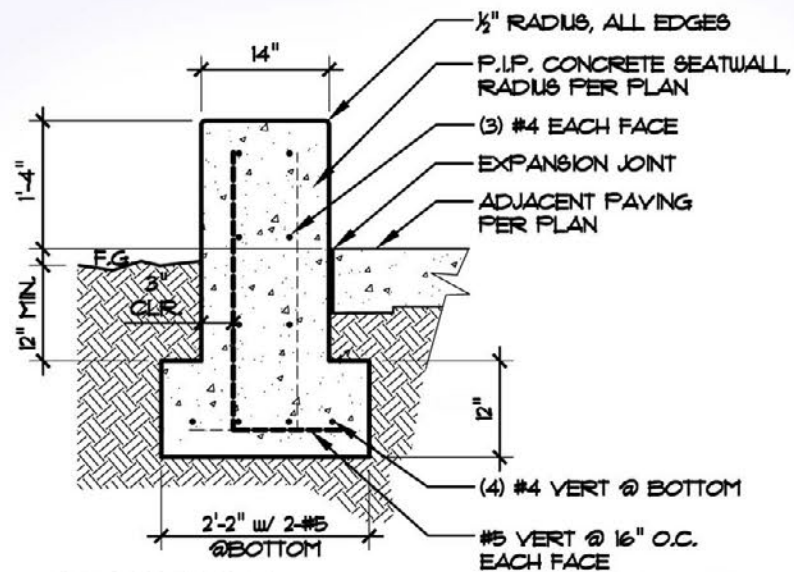


# Poets Park

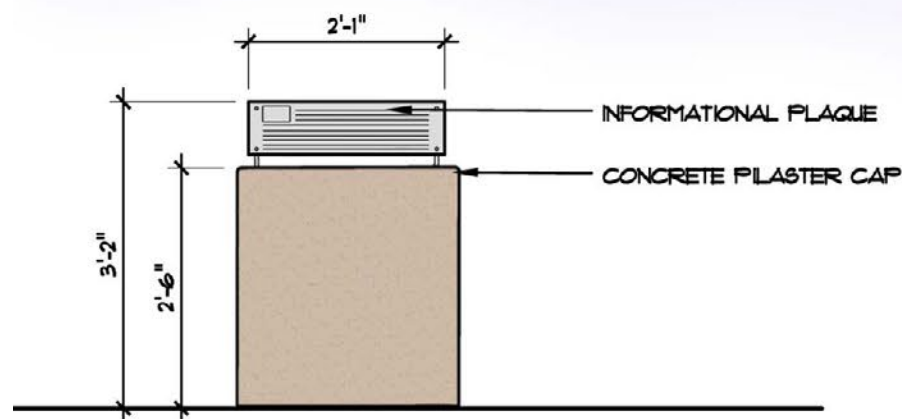
## Detail and Enlargements



Sandblast Poet Panel Enlargements



Blade Wall Detail



Pedestal Detail

**Poets Park - The Fireside Poets**

The City of Whittier, established in 1882 was named after American poet, John Greenleaf Whittier. In the mid to late 19th century, a style of American poetry was widespread and generally admired, and John Greenleaf Whittier was part of this group known as the Fireside Poets.

Also called the "schoolroom" or "household" poets, they were the first group of American poets to rival British poets in popularity in either country. Today their verse may seem more Victorian in sensibility than romantic, considered by some overly sentimental or moralizing in tone, but as a group of poets they are distinguished for their scholarship, political sensibilities, and the resilience of their lines and themes.

William Cullen Bryant, Oliver Wendell Holmes, Henry Wadsworth Longfellow, James Russell Lowell and John Greenleaf Whittier are the poets most commonly associated with the Fireside name. Ralph Waldo Emerson was occasionally included in this group and for Poets Park, we consider him a visiting member.

There is not enough space to inscribe the beautiful works of these poets in total. The quotes and short poems in this park will hopefully inspire us to learn more about these words, to learn more about this era of poetry and how we lived our lives in the mid-to late 19th century.

Fireside Poets: Introduction Plaque