



CITY OF  
**HITTIER**  
CALIFORNIA

# Voting Districts Formation

*City Council Meeting*  
*Tuesday, December 9, 2014*  
*6:30 pm*

# VDF Presentation

- City of Whittier's Voting Districts Formation (VDF) Community Participation Plan Update
- Summary of community feedback
- Presentation of three draft proposals
  - Analysis and considerations
- Questions & Answers

# Community Participation Plan, Round 1

- 23 - Meet the Expert Meetings
- Three Community Meetings
  - 35 – 50 participants per meeting
  - Presentation of VDF process
  - Facilitated discussion with 6-8 participants
    - Communities of interest
    - Reviewed sample and public submitted maps
- Round 2, early 2015
  - Meet the Expert meetings
  - Community Participation Gathering

# Round 1, Community Feedback

- Consensus regarding:
  - Whittier's Communities and areas
  - Major boundaries and streets
- No consensus regarding:
  - Whittier Boulevard as a defining line
  - Breaking up the Uptown Business District (upper and lower)
- Sample map preference
  - Blue
  - Purple
  - Red

# Criteria

| Federal Requirement   |  |
|---|--|
| 1 Equal Population  | As equal as practical based on data and Criteria<br>Based on most recent Census Total Population |
| 2 Minority Voting Rights  | No Discriminatory Purpose<br>No Vote Dilution: Narrowly Tailored                                 |
| 3 Equal Protection  | Race must not Predominate  |
| State Law   |  |
| a Topography  |  |
| b Geography   |  |
| c Cohesiveness, contiguity, integrity, and compactness of territory |  |
| d Community of Interest   |  |

# Demographic Data

## 2010 Census PL94-171: Redistricting Data File

| Population                | Total | NH White | Latino | NH Black | NH Asian |
|---------------------------|-------|----------|--------|----------|----------|
|                           | 85331 | 28.3%    | 65.7%  | 1.1%     | 3.9%     |
| Ideal District Population | 21333 |          |        |          |          |
| Voting Age Population     |       | NH White | Latino | NH Black | NH Asian |
|                           |       | 32.9%    | 60.6%  | 1.1%     | 4.3%     |

## 2012 5 Year American Community Survey: DOJ Special Tabulation

| Citizen Voting Age Population |  | NH White | Latino | NH Black | NH Asian |
|-------------------------------|--|----------|--------|----------|----------|
|                               |  | 35.3%    | 57.7%  | 0.4%     | 1.3%     |

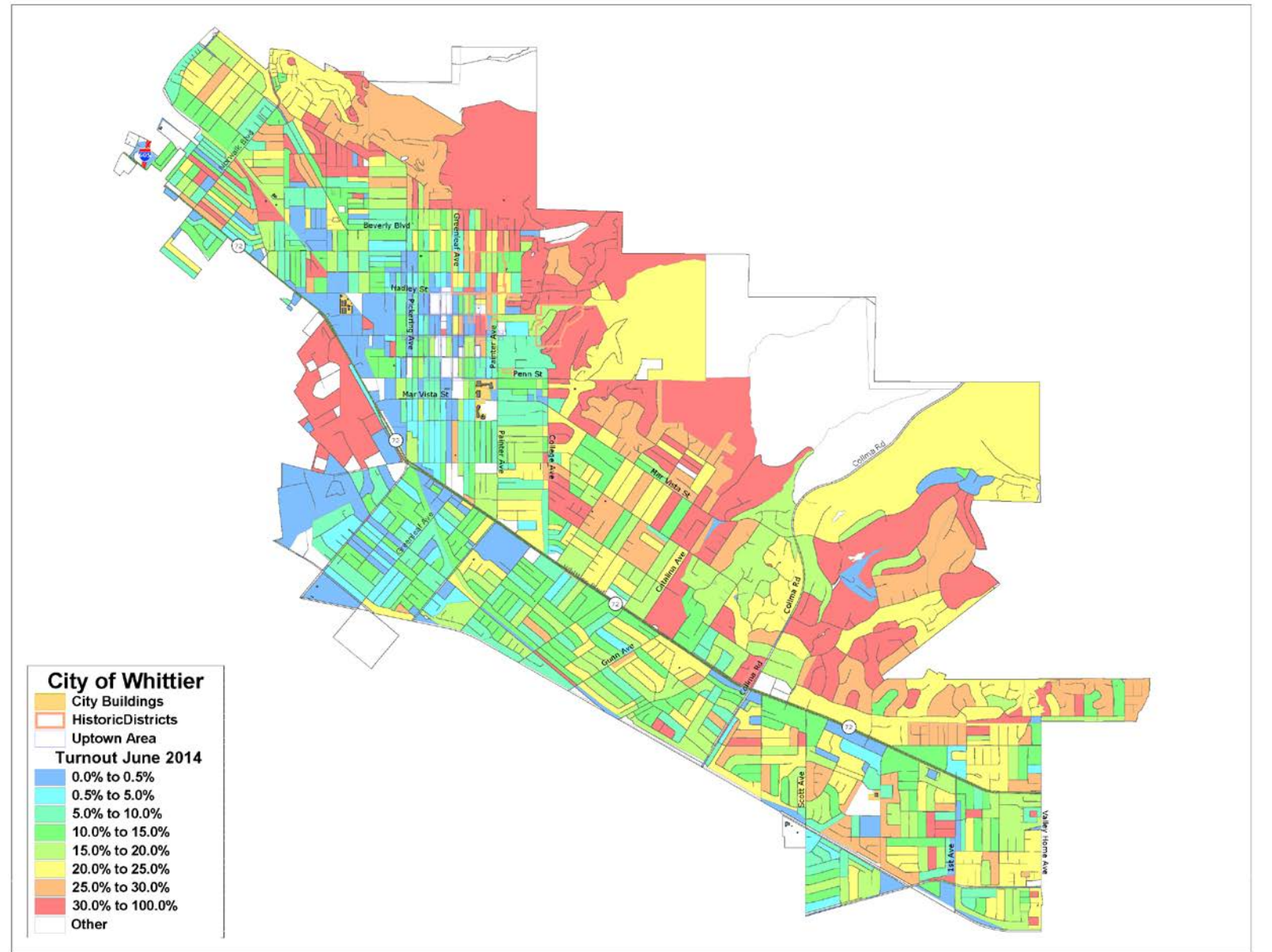
## Statewide Database

|                            |  | Spanish Surnamed | Asian Surnamed |
|----------------------------|--|------------------|----------------|
| Nov 2010 Registered Voters |  | 47.9%            | 3.2%           |
| Nov 2010 Actual Voters     |  | 42.1%            | 3.0%           |

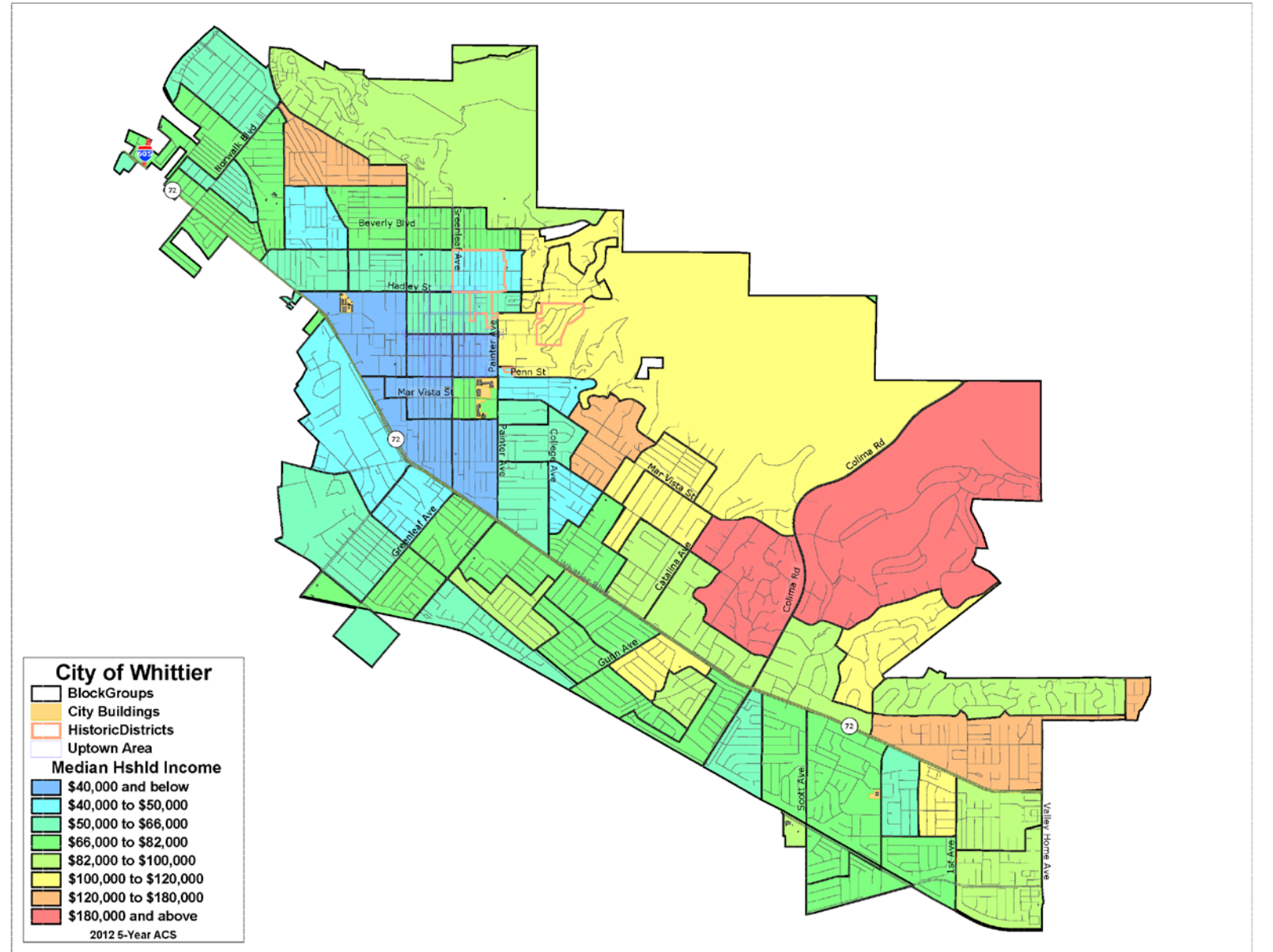
## Compass Demographics - City Clerk

|                             |       | Spanish Surnamed |
|-----------------------------|-------|------------------|
| April 2012 Actual Voters    |       | 28.0%            |
| April 2014 Actual Voters    |       | 29.2%            |
| June 2014 Turnout           | 17.3% |                  |
| June 2014 Registered Voters |       | 51.2%            |
| June 2014 Actual Voters     |       | 32.6%            |

# Turnout June 2014

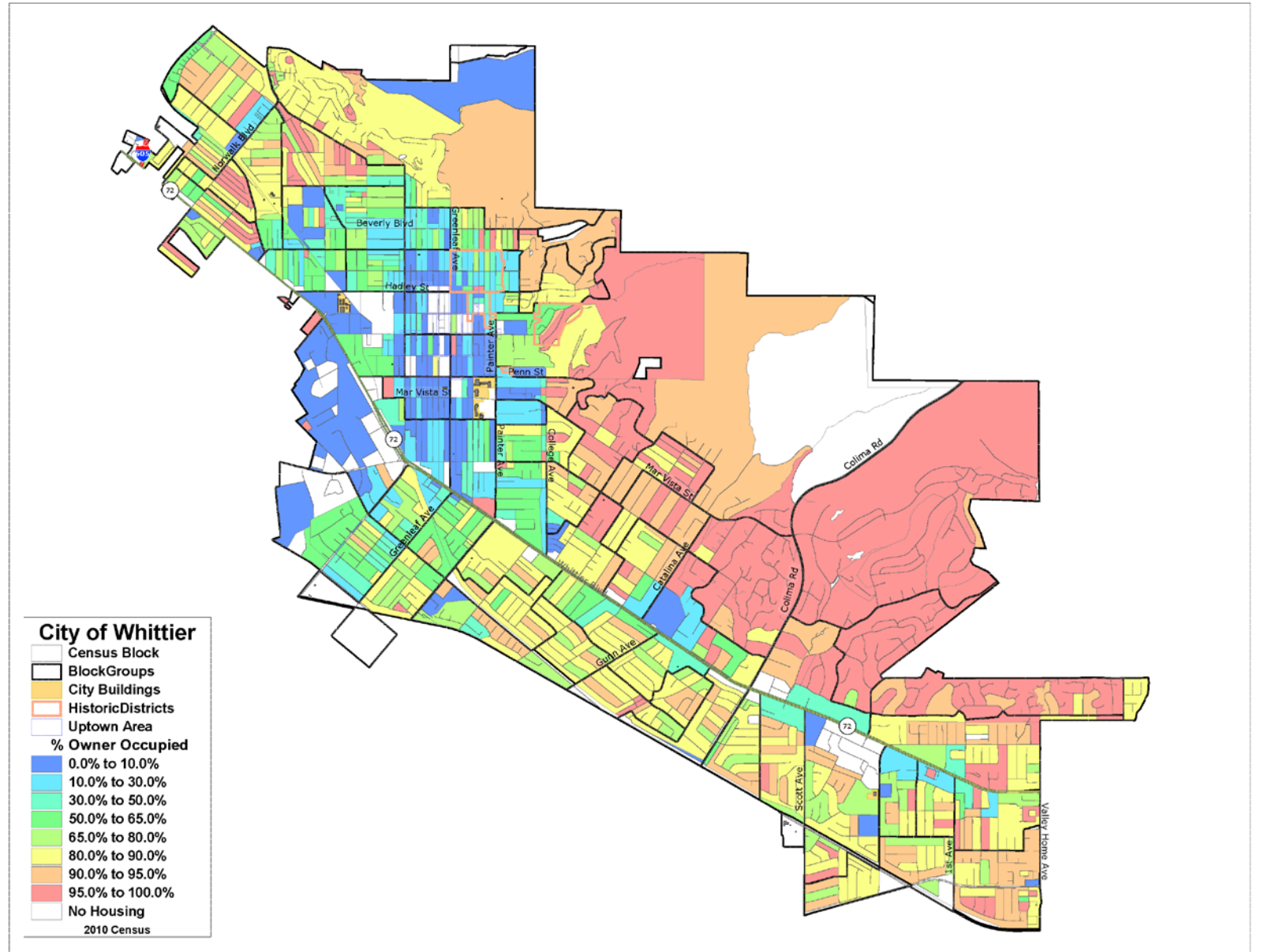


# Median Household Income

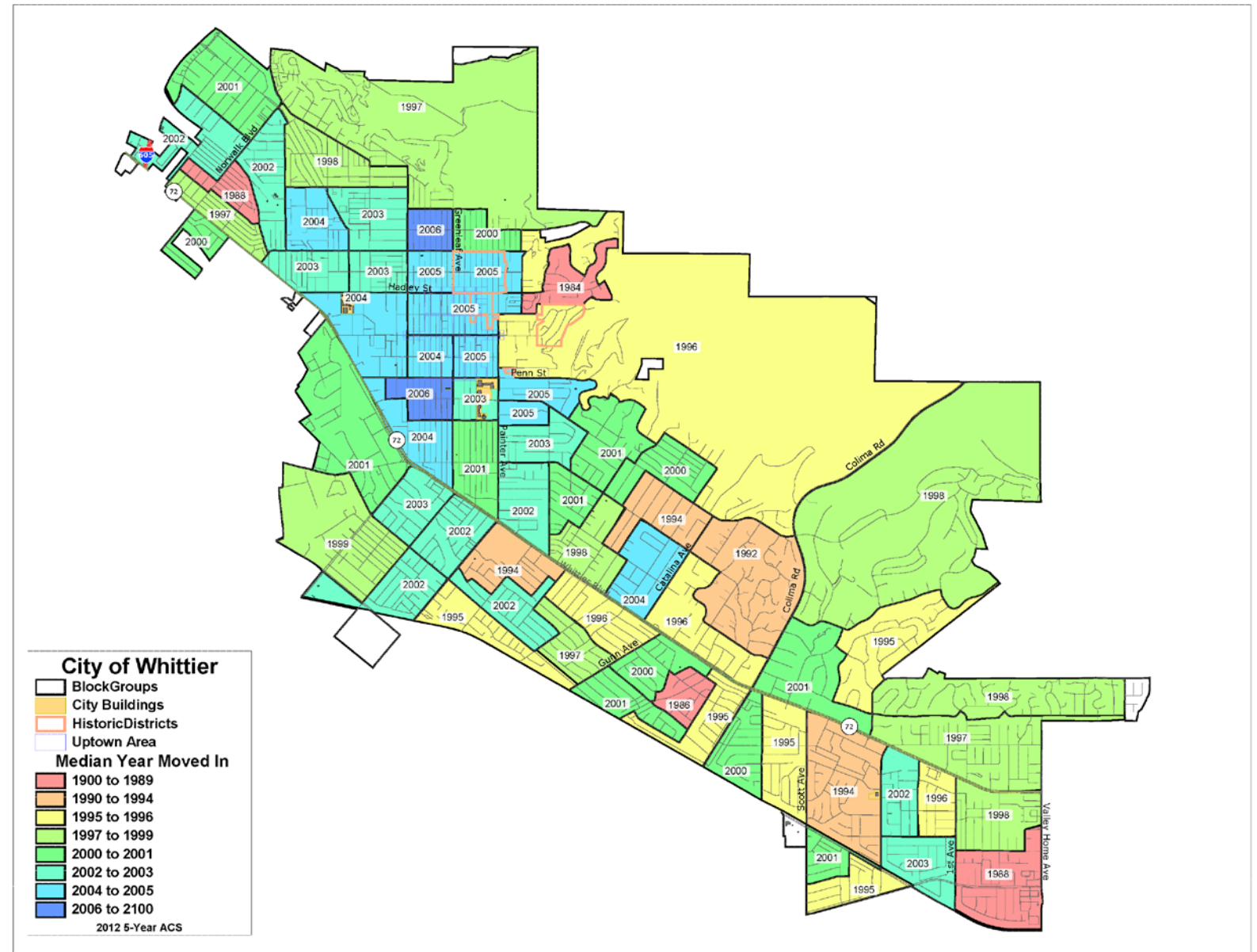




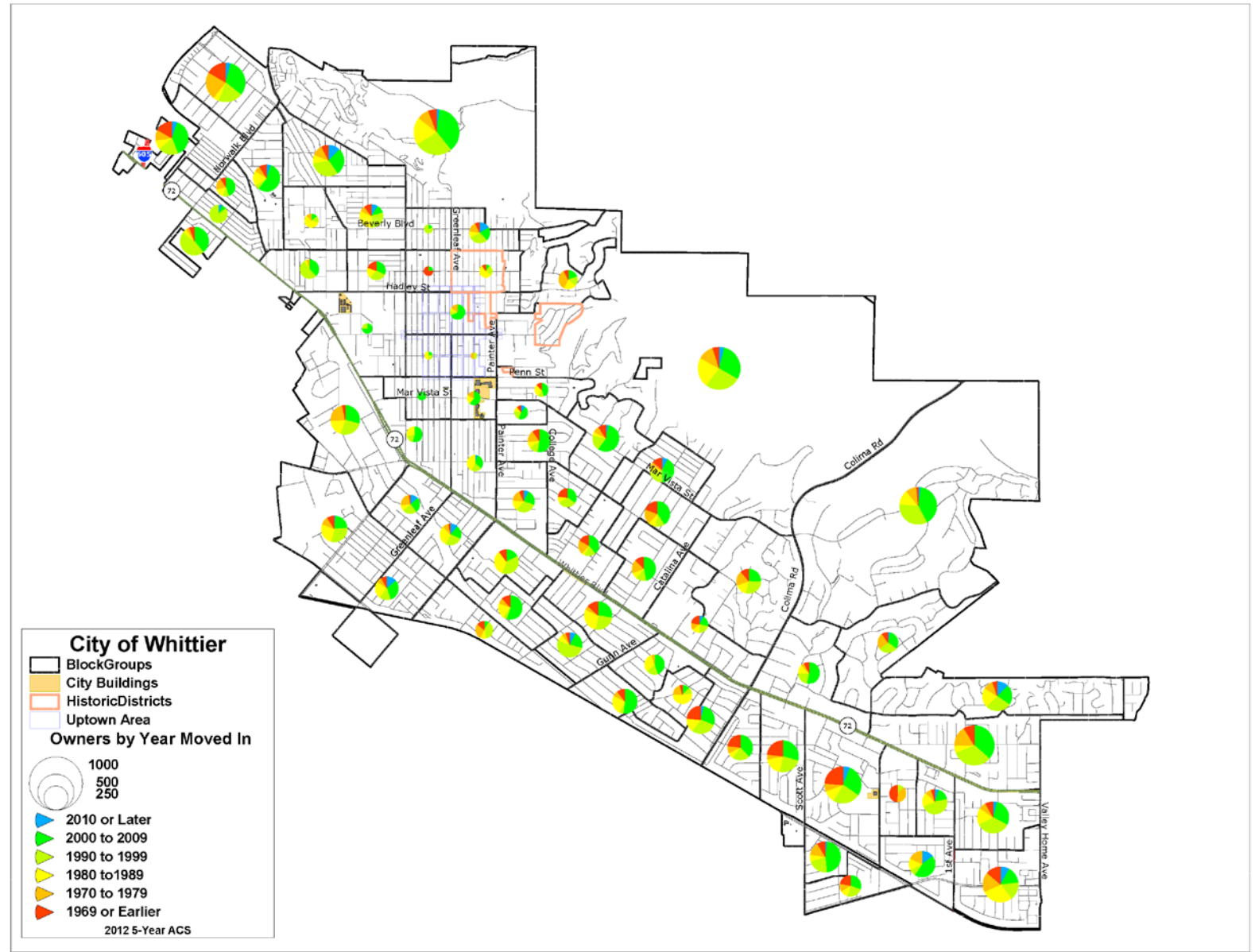
# Housing % Owner Occupied



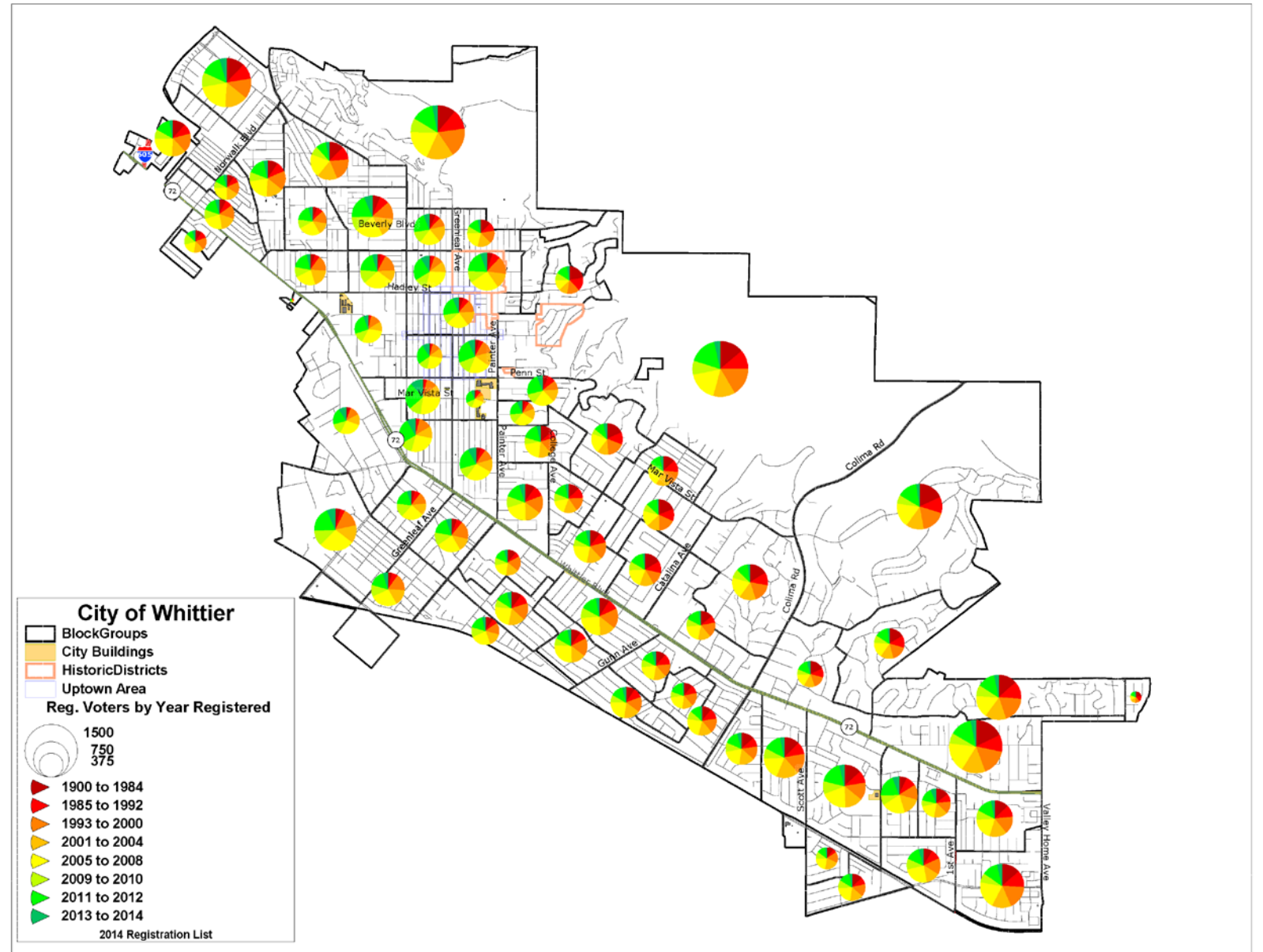
# Median Year Moved In



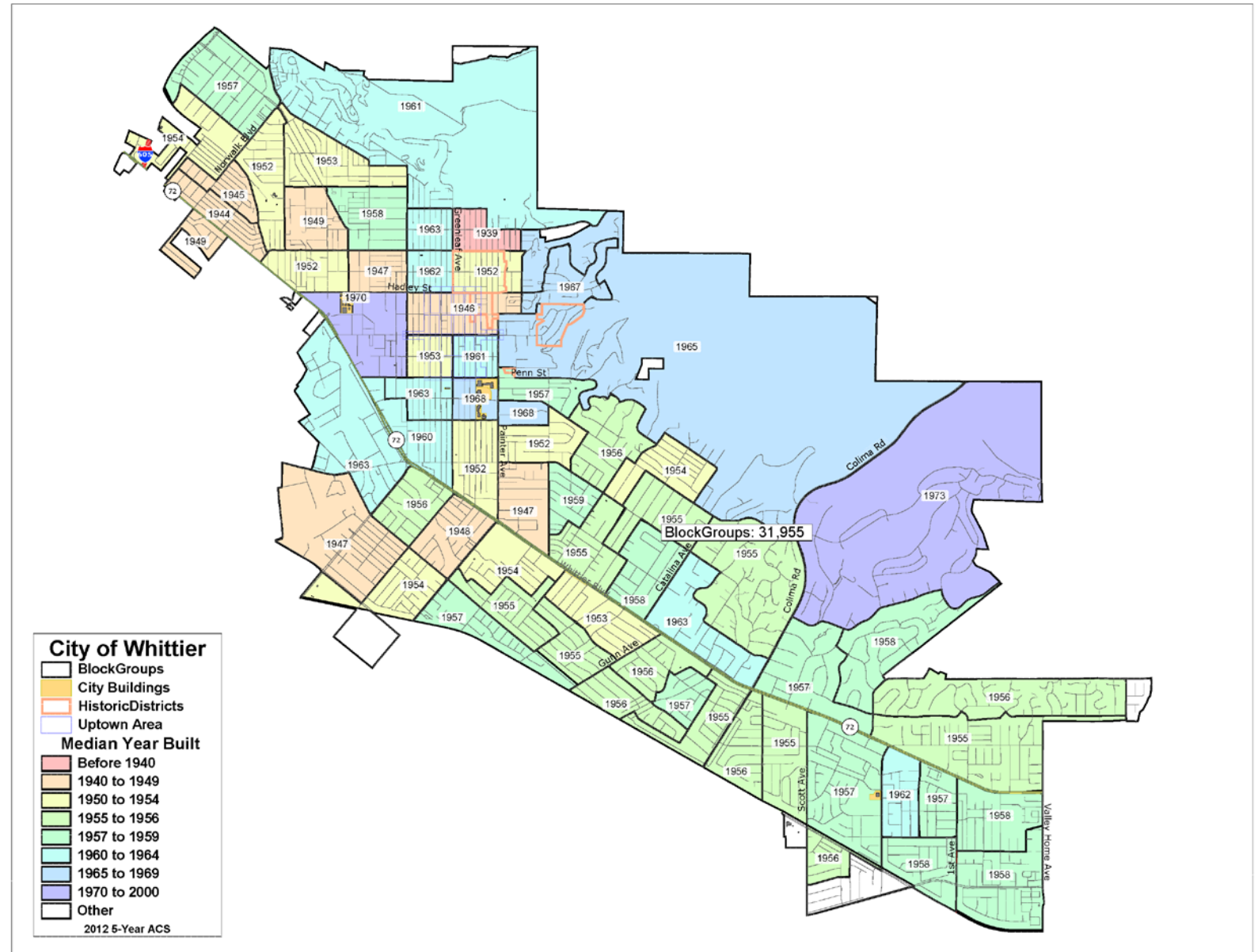
# Owners by Year Moved In



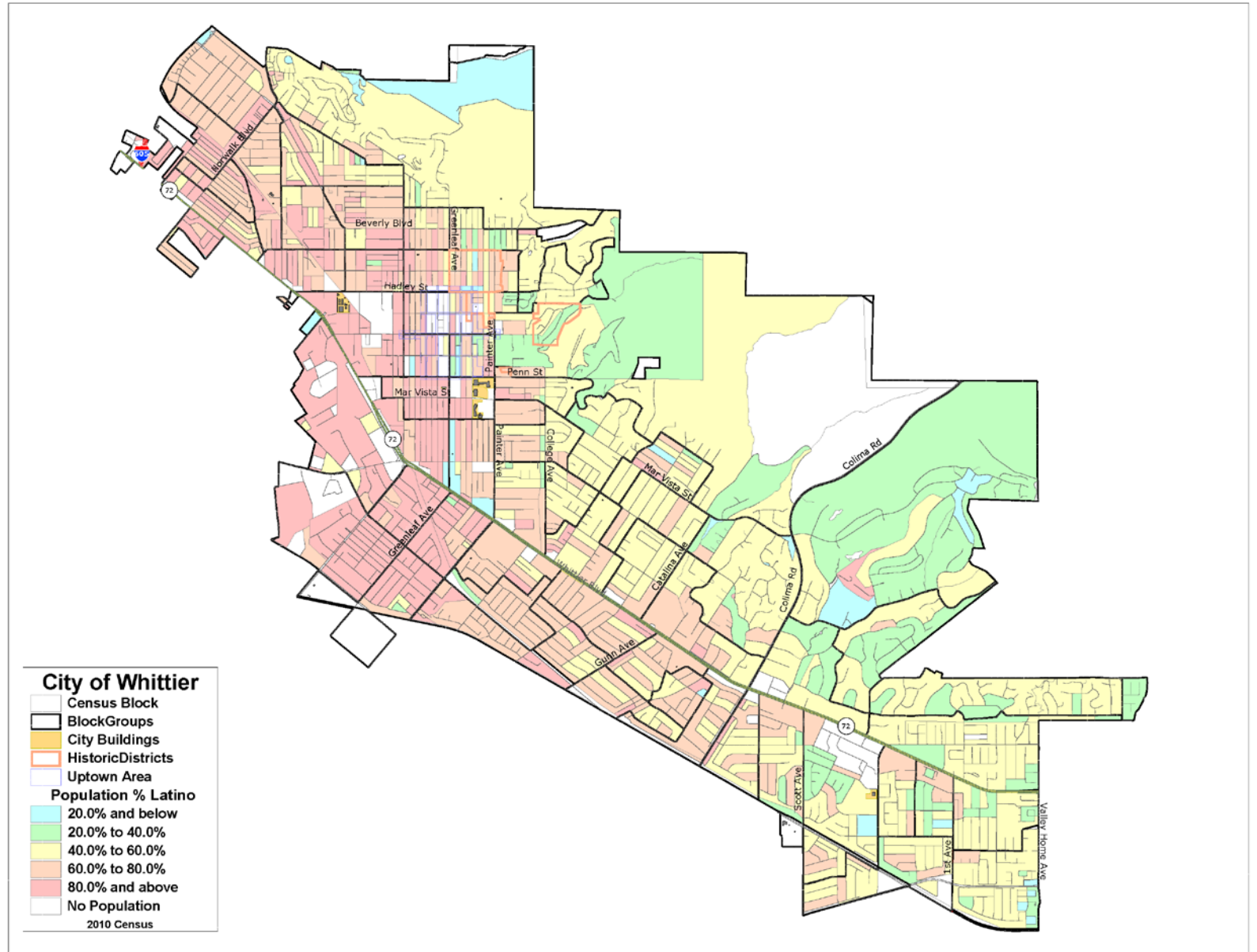
# Registered Voters by Year Registered



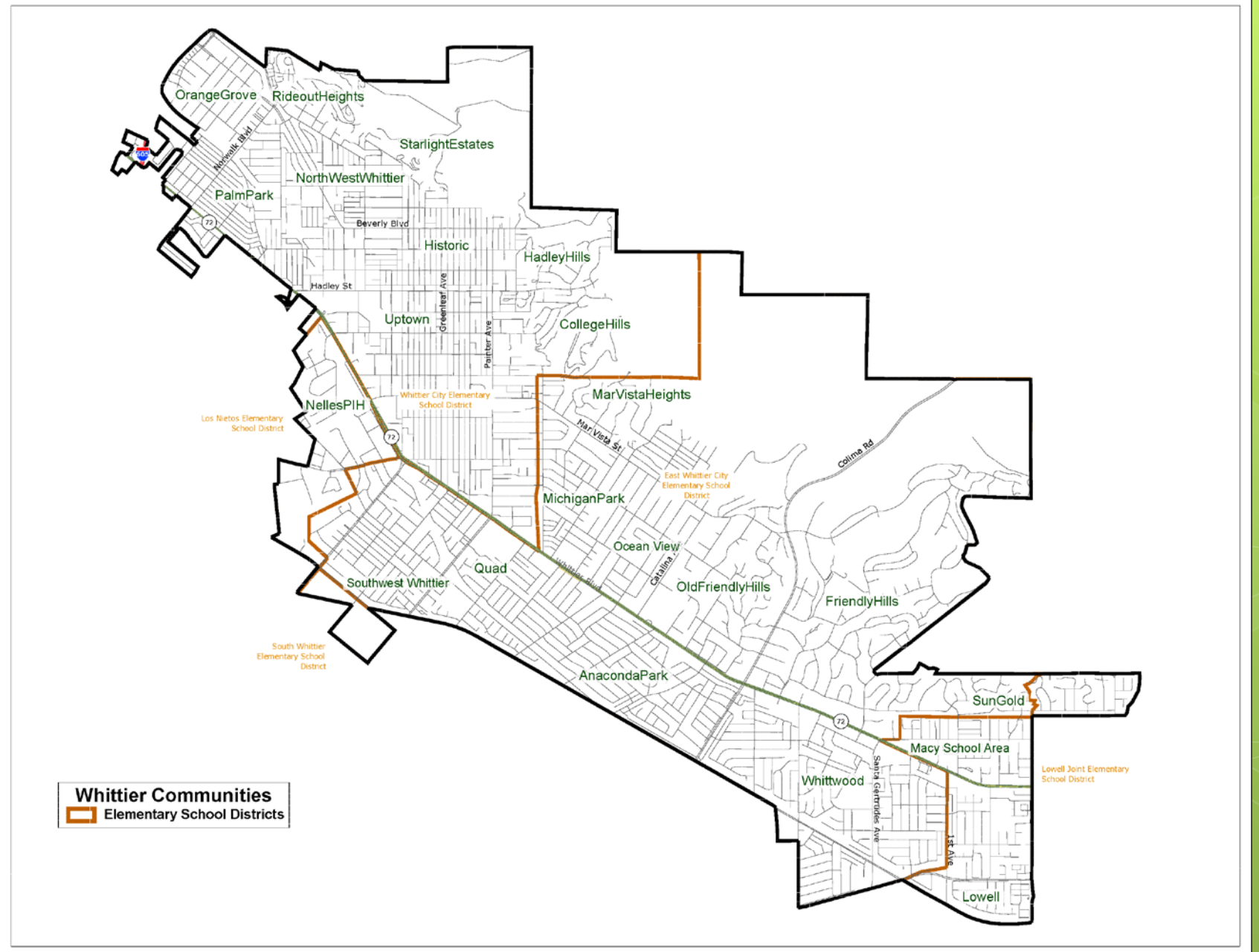
# Median Year Build



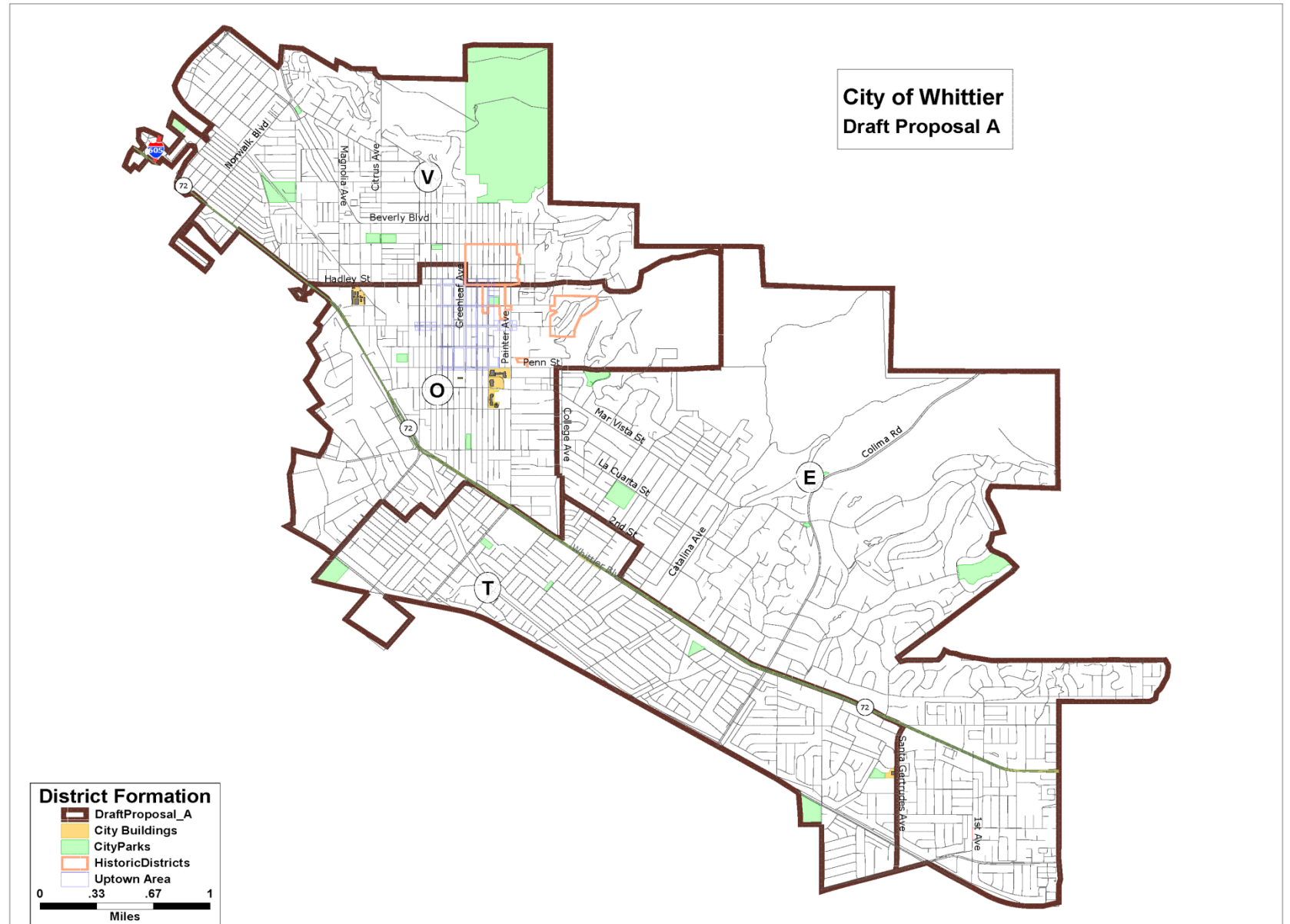
# Population % Latino



# Communities with Elementary School Districts

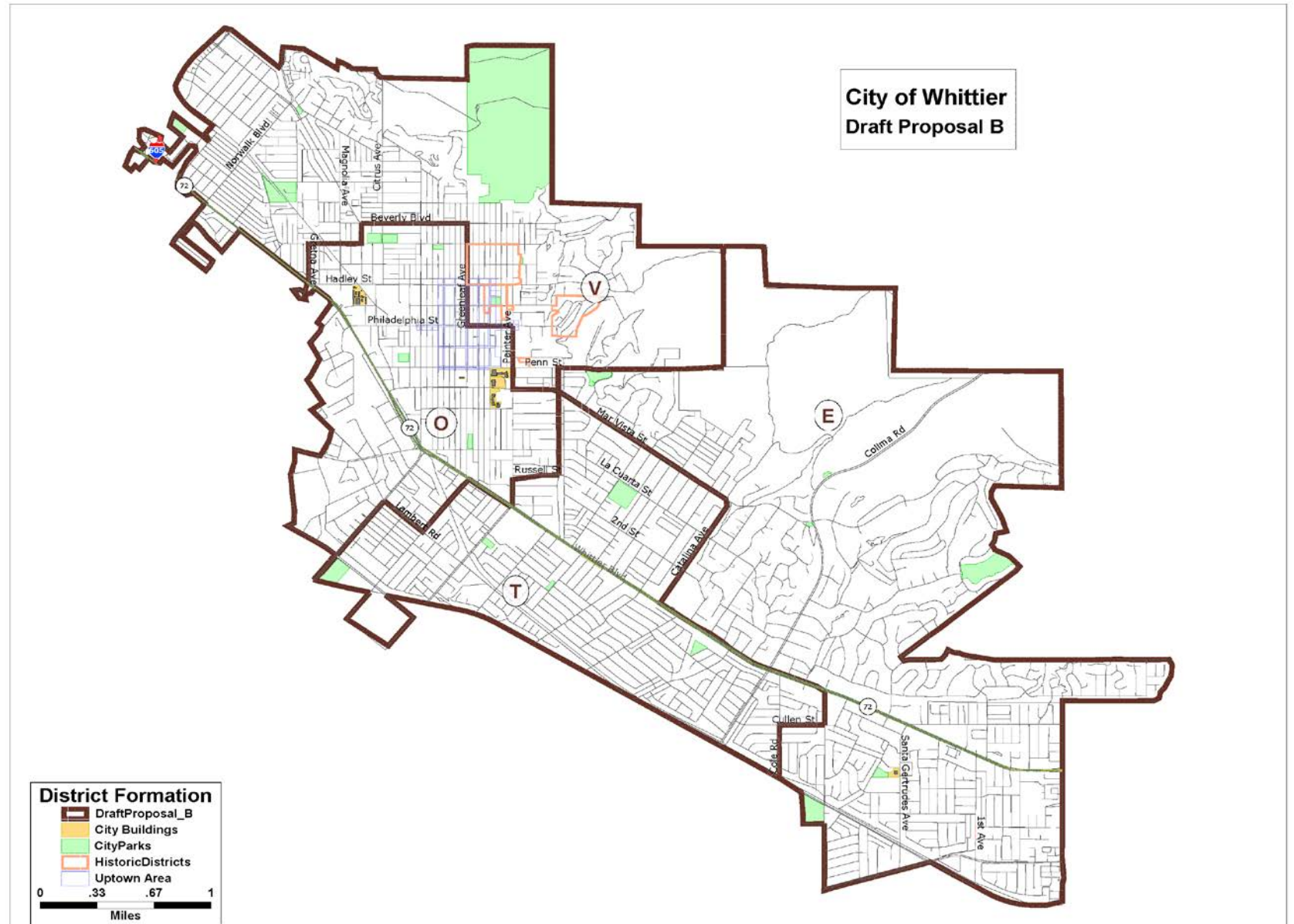


# Proposal A

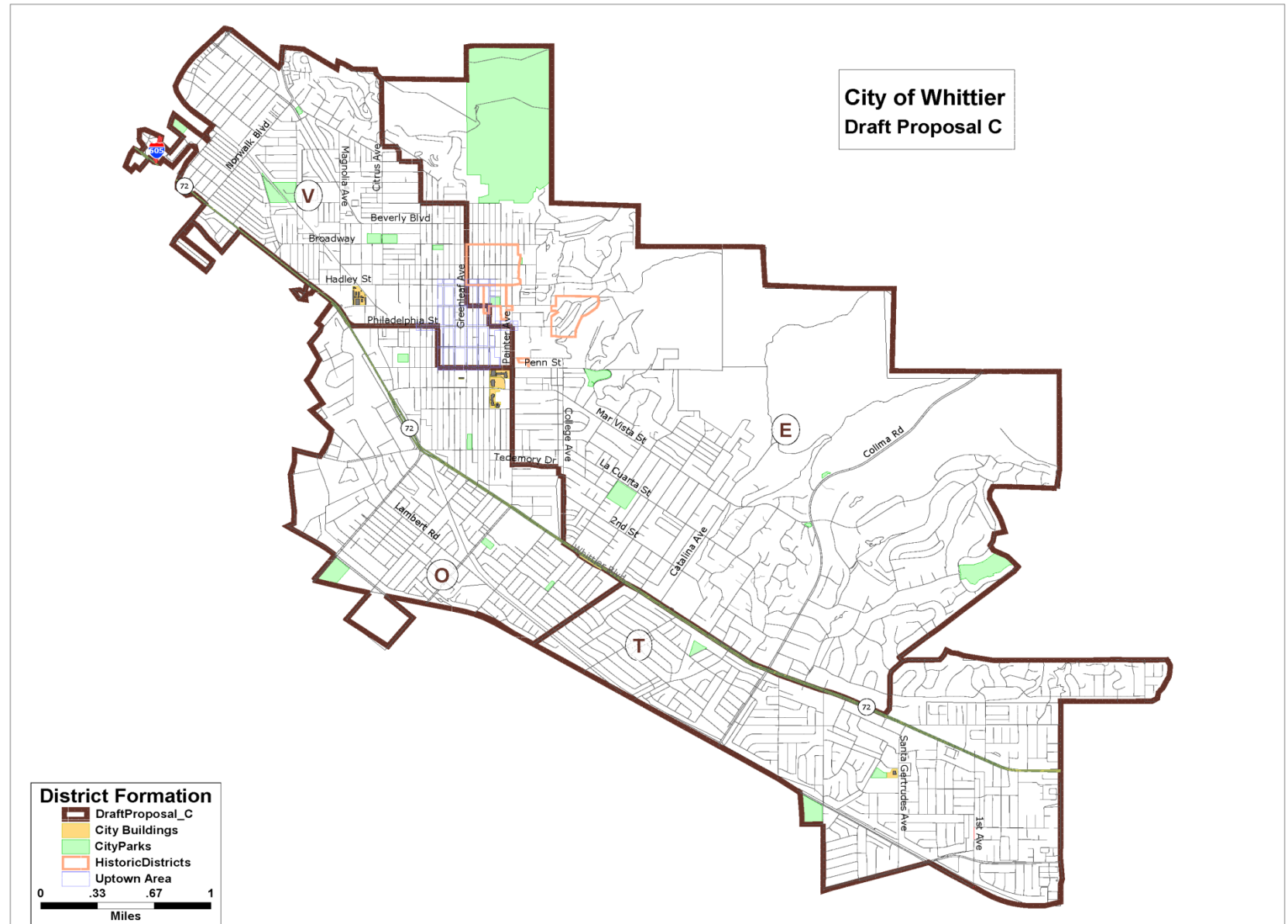




# Proposal B



# Proposal C



# Proposal A Data

| District                         | Draft Proposal A |       |       |       | City Total |
|----------------------------------|------------------|-------|-------|-------|------------|
|                                  | V                | O     | T     | E     |            |
| Population                       | 21465            | 21443 | 21035 | 21388 | 85331      |
| Deviation                        | 132              | 110   | -298  | 55    |            |
| % Deviation                      | 0.6%             | 0.5%  | -1.4% | 0.3%  |            |
| Latino                           | 71.2%            | 74.6% | 69.2% | 47.9% | 65.7%      |
| White                            | 23.6%            | 19.3% | 26.0% | 44.2% | 28.3%      |
| Black                            | 1.0%             | 1.5%  | 0.7%  | 0.9%  | 1.1%       |
| Asian                            | 3.0%             | 3.3%  | 3.2%  | 6.2%  | 3.9%       |
| Voting Age Pop.                  |                  |       |       |       |            |
| Latino                           | 66.8%            | 69.4% | 64.5% | 42.6% | 60.6%      |
| White                            | 27.7%            | 23.7% | 30.4% | 49.2% | 32.9%      |
| Black                            | 1.1%             | 1.7%  | 0.7%  | 0.9%  | 1.1%       |
| Asian                            | 3.3%             | 4.0%  | 3.5%  | 6.4%  | 4.3%       |
| Citizen Voting Age Pop D12       |                  |       |       |       |            |
| Latino                           | 65.0%            | 65.1% | 58.0% | 44.4% | 57.7%      |
| White                            | 28.0%            | 27.2% | 36.3% | 48.0% | 35.3%      |
| Black                            | 0.5%             | 1.1%  | 0.1%  | 0.2%  | 0.4%       |
| Asian                            | 0.3%             | 2.0%  | 1.4%  | 1.5%  | 1.3%       |
| Spanish Surname Reg 2010         | 55.4%            | 56.3% | 52.0% | 33.5% | 47.9%      |
| Asian Surname Reg 2010           | 2.5%             | 3.5%  | 2.9%  | 3.8%  | 3.2%       |
| Spanish Surname Voted Nov 2010   | 50.3%            | 50.9% | 46.0% | 30.0% | 42.1%      |
| Asian Surname Voted Nov 2010     | 2.4%             | 3.2%  | 3.1%  | 3.3%  | 3.0%       |
| Spanish Surname Voted April 2012 | 34.5%            | 34.0% | 30.3% | 21.7% | 28.0%      |
| Spanish Surname Voted April 2014 | 36.9%            | 33.7% | 31.7% | 21.9% | 29.2%      |
| Turnout June 2014                | 18.0%            | 11.7% | 14.4% | 22.4% | 17.3%      |
| Spanish Surname Reg June 2014    | 58.3%            | 60.1% | 54.6% | 37.3% | 51.2%      |
| Spanish Surname Voted June 2014  | 40.0%            | 39.3% | 35.8% | 23.9% | 32.6%      |

# Proposal B Data

| District                         | Draft Proposal B |       |       |       | City Total |
|----------------------------------|------------------|-------|-------|-------|------------|
|                                  | V                | O     | T     | E     |            |
| Population                       | 21203            | 21188 | 21427 | 21513 | 85331      |
| Deviation                        | -130             | -145  | 94    | 180   |            |
| % Deviation                      | -0.6%            | -0.7% | 0.4%  | 0.8%  |            |
| Latino                           | 66.8%            | 79.3% | 69.4% | 47.7% | 65.7%      |
| White                            | 27.0%            | 15.7% | 26.2% | 44.0% | 28.3%      |
| Black                            | 1.3%             | 1.2%  | 0.7%  | 1.0%  | 1.1%       |
| Asian                            | 3.6%             | 2.6%  | 2.9%  | 6.5%  | 3.9%       |
| Voting Age Pop.                  |                  |       |       |       |            |
| Latino                           | 61.9%            | 75.0% | 64.5% | 42.6% | 60.6%      |
| White                            | 31.5%            | 19.2% | 30.8% | 48.9% | 32.9%      |
| Black                            | 1.4%             | 1.3%  | 0.7%  | 0.9%  | 1.1%       |
| Asian                            | 3.9%             | 3.4%  | 3.1%  | 6.8%  | 4.3%       |
| Citizen Voting Age Pop D12       |                  |       |       |       |            |
| Latino                           | 60.1%            | 71.1% | 59.0% | 43.4% | 57.7%      |
| White                            | 32.2%            | 21.7% | 36.0% | 48.6% | 35.3%      |
| Black                            | 0.4%             | 1.3%  | 0.1%  | 0.2%  | 0.4%       |
| Asian                            | 1.4%             | 0.8%  | 1.3%  | 1.5%  | 1.3%       |
| Spanish Surname Reg 2010         | 51.9%            | 62.1% | 51.5% | 33.5% | 47.9%      |
| Asian Surname Reg 2010           | 2.7%             | 3.1%  | 2.4%  | 4.3%  | 3.2%       |
| Spanish Surname Voted Nov 2010   | 47.2%            | 57.3% | 45.3% | 29.8% | 42.1%      |
| Asian Surname Voted Nov 2010     | 2.4%             | 3.0%  | 2.5%  | 3.8%  | 3.0%       |
| Spanish Surname Voted April 2012 | 33.4%            | 37.6% | 30.8% | 20.1% | 28.0%      |
| Spanish Surname Voted April 2014 | 34.9%            | 39.4% | 32.3% | 20.2% | 29.2%      |
| Turnout June 2014                | 19.2%            | 9.9%  | 15.9% | 21.4% | 17.3%      |
| Spanish Surname Reg June 2014    | 55.1%            | 65.0% | 54.7% | 36.7% | 51.2%      |
| Spanish Surname Voted June 2014  | 38.0%            | 44.1% | 36.3% | 23.0% | 32.6%      |

# Proposal C Data

| District                         | Draft Proposal C |       |       |       | City Total |
|----------------------------------|------------------|-------|-------|-------|------------|
|                                  | V                | O     | T     | E     |            |
| Population                       | 21495            | 21183 | 21299 | 21354 | 85331      |
| Deviation                        | 162              | -150  | -34   | 21    |            |
| % Deviation                      | 0.8%             | -0.7% | -0.2% | 0.1%  |            |
| Latino                           | 74.6%            | 82.0% | 53.2% | 53.1% | 65.7%      |
| White                            | 19.7%            | 14.2% | 40.6% | 38.6% | 28.3%      |
| Black                            | 1.1%             | 0.9%  | 0.8%  | 1.3%  | 1.1%       |
| Asian                            | 3.3%             | 2.0%  | 4.5%  | 5.9%  | 3.9%       |
| Voting Age Pop.                  |                  |       |       |       |            |
| Latino                           | 70.2%            | 78.4% | 48.0% | 47.7% | 60.6%      |
| White                            | 23.5%            | 17.3% | 45.6% | 43.6% | 32.9%      |
| Black                            | 1.2%             | 1.1%  | 0.8%  | 1.3%  | 1.1%       |
| Asian                            | 3.9%             | 2.3%  | 4.7%  | 6.2%  | 4.3%       |
| Citizen Voting Age Pop D12       |                  |       |       |       |            |
| Latino                           | 69.6%            | 69.5% | 47.1% | 48.3% | 57.7%      |
| White                            | 23.7%            | 23.1% | 48.0% | 42.8% | 35.3%      |
| Black                            | 0.9%             | 0.4%  | 0.2%  | 0.3%  | 0.4%       |
| Asian                            | 0.6%             | 1.7%  | 0.4%  | 2.4%  | 1.3%       |
| Spanish Surname Reg 2010         | 59.2%            | 65.1% | 39.1% | 36.8% | 47.9%      |
| Asian Surname Reg 2010           | 2.9%             | 2.2%  | 3.1%  | 4.0%  | 3.2%       |
| Spanish Surname Voted Nov 2010   | 54.9%            | 59.5% | 34.9% | 32.7% | 42.1%      |
| Asian Surname Voted Nov 2010     | 2.6%             | 2.5%  | 3.0%  | 3.5%  | 3.0%       |
| Spanish Surname Voted April 2012 | 39.3%            | 41.5% | 22.4% | 23.9% | 28.0%      |
| Spanish Surname Voted April 2014 | 40.5%            | 43.2% | 23.2% | 24.4% | 29.2%      |
| Turnout June 2014                | 15.2%            | 9.7%  | 18.2% | 23.2% | 17.3%      |
| Spanish Surname Reg June 2014    | 62.1%            | 67.3% | 41.8% | 40.9% | 51.2%      |
| Spanish Surname Voted June 2014  | 44.0%            | 51.3% | 27.1% | 25.6% | 32.6%      |

Thank you