

2.2.1 Parks

The neighborhood park system has been conceived as a series of small highly specialized parks within 5 minutes walk of all residents within Uptown. The specialized parks will concentrate on specific needs such as playgrounds/ tot lots, athletic courts, and gaming areas. The plan recognizes that many of the parks will remain open space for impromptu athletic uses for all ages such as soccer/kickball, throwing and playing. Designs for the parks should include structures or tree bosques for cool shady seating areas. Plant material selections for parks shall emphasize native, drought tolerant and naturalized plantings for cultural and educational values, as seen in the following lists of acceptable plant materials:

A. Trees

- *Cercis occidentalis* / Western Redbud
- *Fraxinus raywoodii* / Raywood Ash
- *Fraxinus velutina* / Modesto Ash
- *Platanus racemosa* / California Sycamore Tree
- *Quercus agrifolia* / Coast Live Oak
- *Quercus douglasii* / Douglas Blue Oak
- *Schnius molle* / California Pepper
- *Umbellularia californica* / California Bay
- *Washingtonia filifera* / California Fan Palm

B. Tall Shrubs

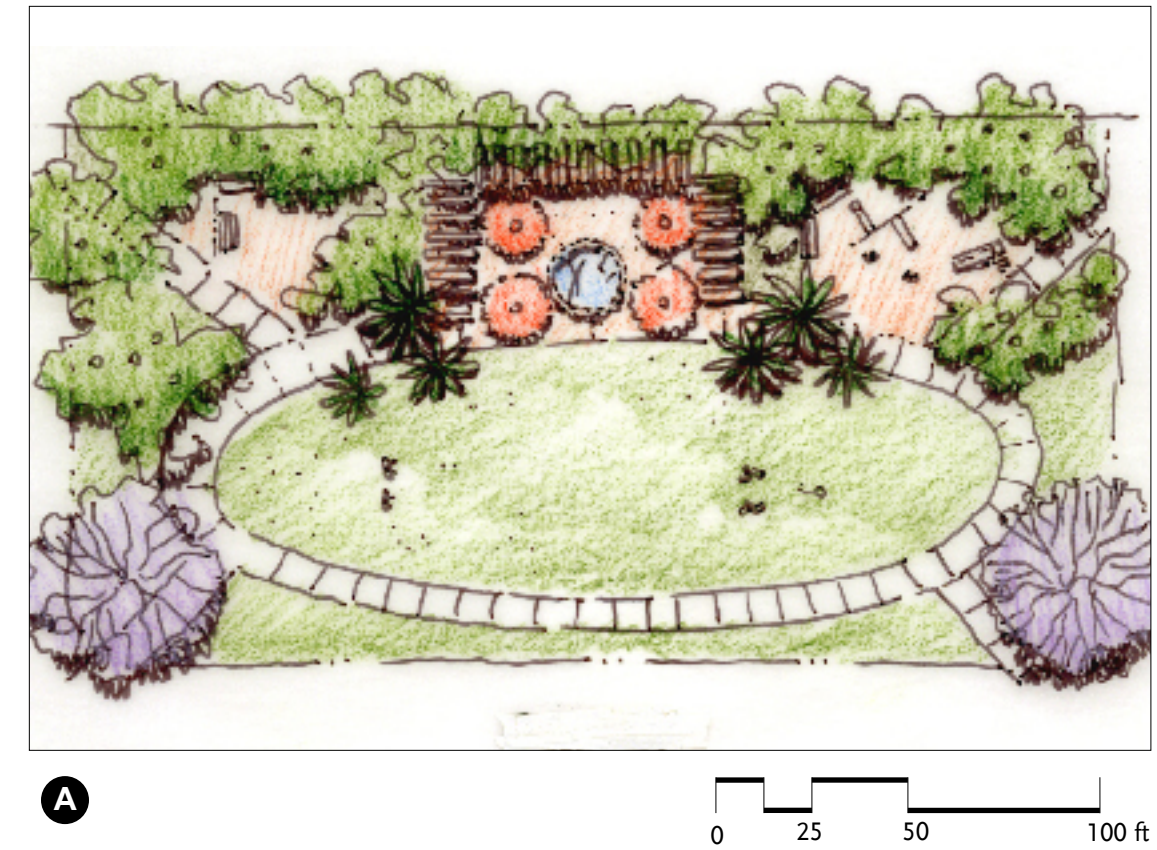
- *Abelia grandiflora* / Glossy Abelia
- *Buddleia davidii* / Butterfly Bush
- *Heteromelies arbutifolia* / Toyon
- *Escallonia fradesii* / Escallonia
- *Pittosporum tobira* / Tobira
- *Pittosporum undulatum* / Victoria Box
- *Photinia fraseri* / Photinia
- *Rhus ovata* / Sugarbush
- *Rhus integrifolia* / Lemonade Berry
- *Romneya coulteri* / Matilija Poppy

C. Low Shrubs and Groundcovers

- *Arctostaphylos* Sp / Manzanita
- *Camellia sasanqua* / Camellia
- *Ceanothus* Sp. / California Lilac
- *Cistus salvifolius* / Rockrose
- *Carpenteria californica* / NCN
- *Erigeron karvinskianus* / Santa Barbara Daisy
- *Euryops pectinatus* / Golden Shrub Daisy
- *Felicia amellioides* / NCN
- *Hemerocallis Hyridus* / Hybrid Daylily
- *Heuchera sanguinea* / Coral Bells
- *Kniphofia uvaria* / Red Hot Poker
- *Lavandula stoechys* / Spanish Lavender
- *Lavandula angustifolia* / English
- *Pittosporum 'Whealers Dwarf'* / Dwarf Tobira

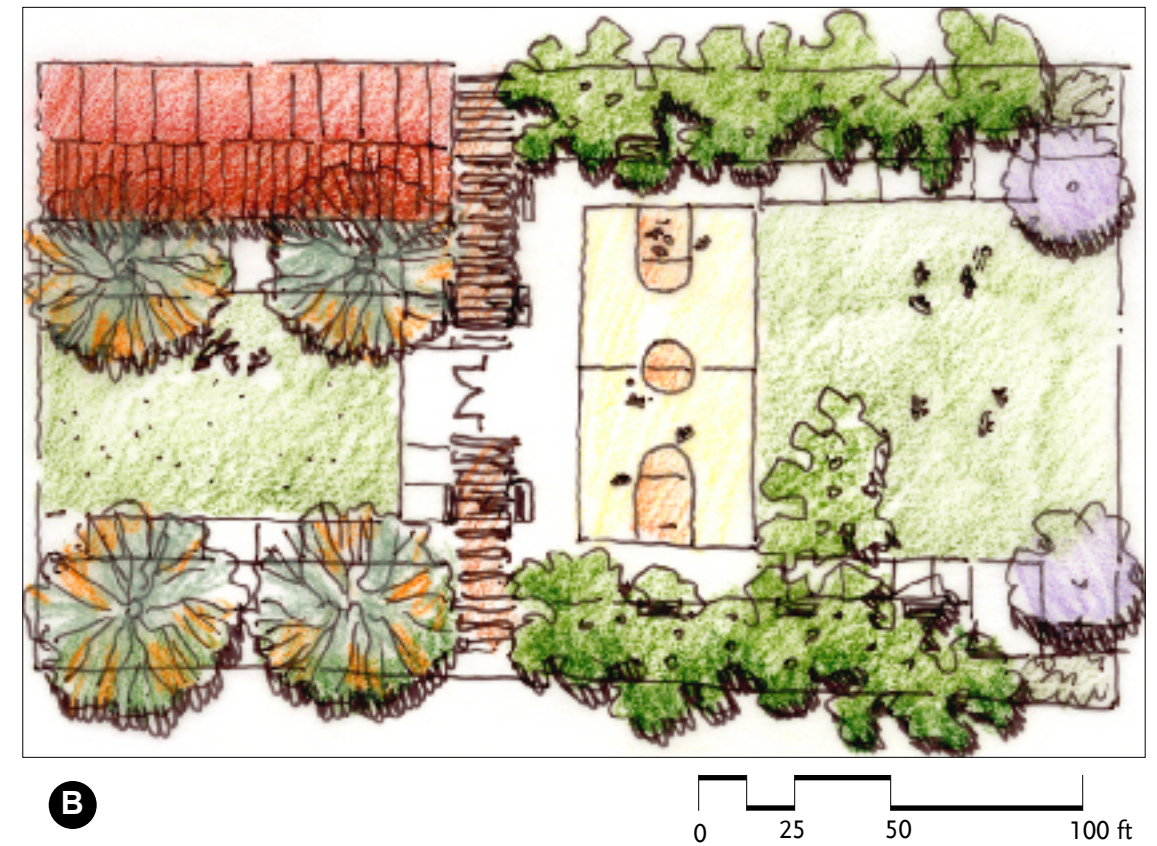
D. Grasses

- *Juncus patens* / California Grey Rush
- *Heliototrichon sempervirens* / Blue Oat Grass
- *Miscanthus sinensis* / Maiden Grass
- *Muhlenbergia rigens* / Deer Grass
- *Pennisetum setaceum 'rubrum'* / Red

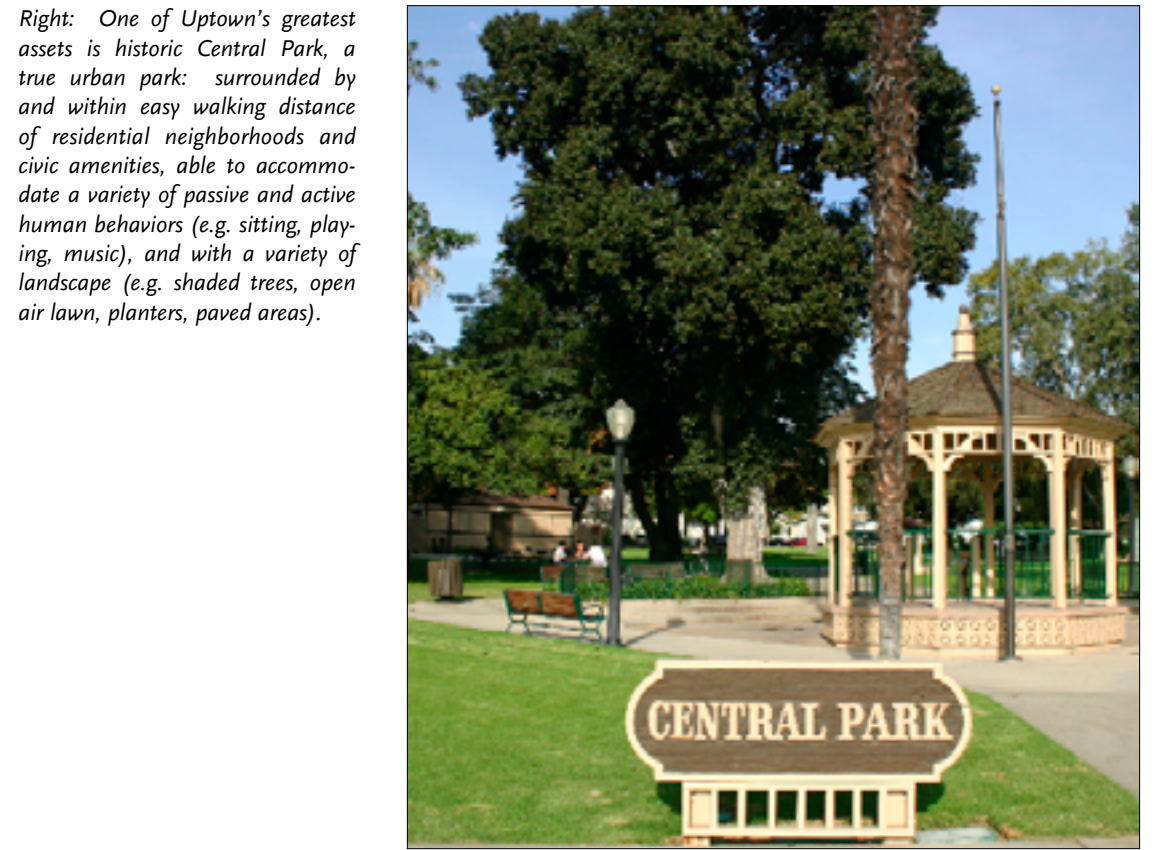


Above: The City of Whittier has a number of small parks, such as Broadway Park, in a residential neighborhood just north of the Uptown Specific Plan area. This park accommodates a small children's play area, for the many families which reside nearby, and is surrounded by numerous shaded trees which provide welcome respite from the warm summer sun.

Above: Proposed park on the south side of the site between Milton Avenue, Bailey Street, and Comstock Avenue. The park could be part of a mixed-use development on the larger site, and would serve the northwest quadrant of Uptown. The tenor of this park would be more passive, with a large grassy areas and pockets for sitting and gathering shaded by trees and a trellis in the center.



Right: Proposed park mid-block on the site south of Philadelphia Street, between Milton Avenue and Comstock Avenue, incorporating an existing building. The park is intended to be easily accessible from the southwest quadrant of Uptown, and contains a basketball court in addition to shaded trees and grassy fields.



Right: One of Uptown's greatest assets is historic Central Park, a true urban park: surrounded by residential neighborhoods and civic amenities, able to accommodate a variety of passive and active human behaviors (e.g. sitting, playing, music), and with a variety of landscape (e.g. shaded trees, open air lawn, planters, paved areas).

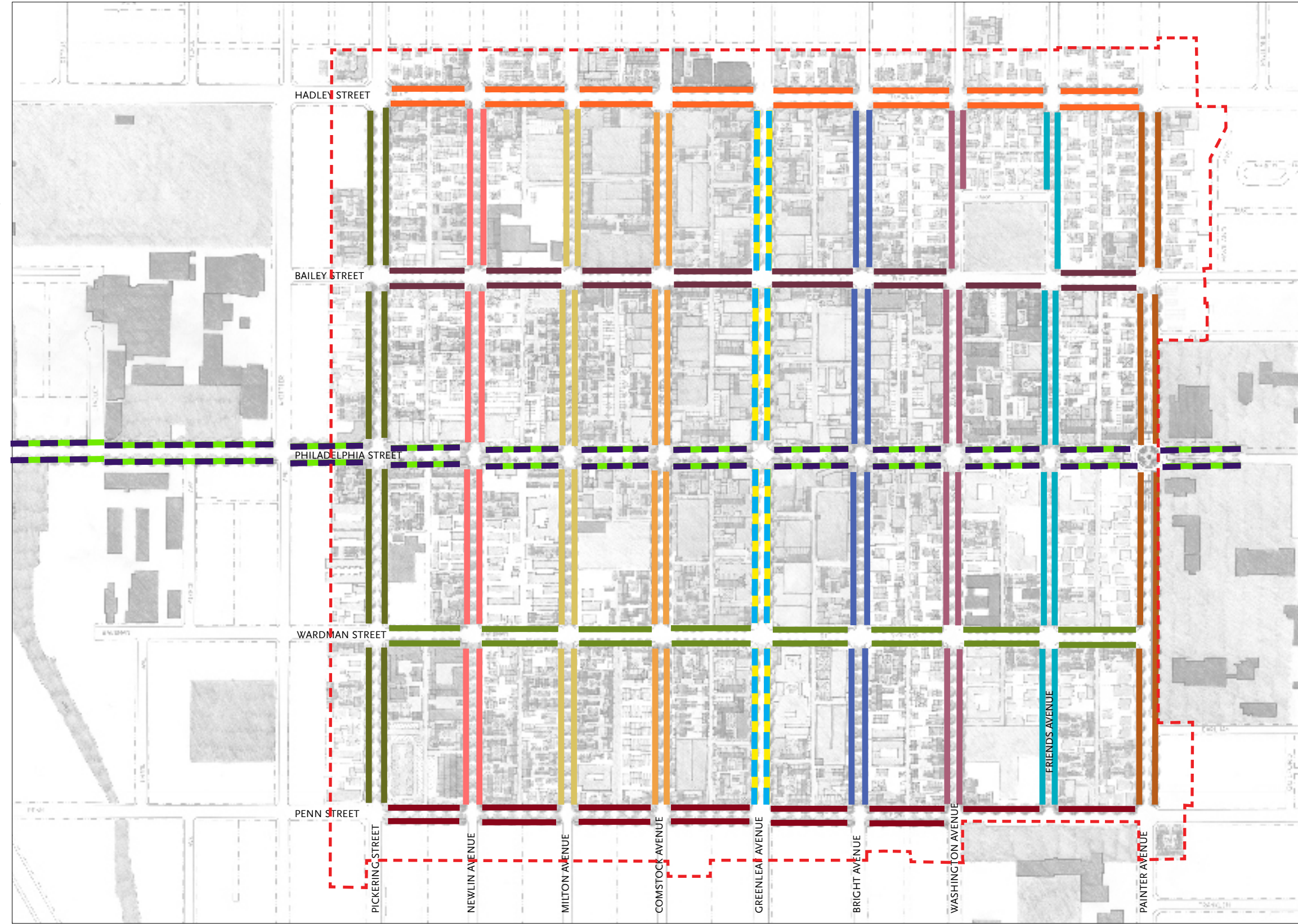
2.2.2 Street Trees

The role of the street tree plan is to establish a visual and environmental order within the framework of Uptown. Future tree planting and streetscape work will be guided by the objectives and standards in this section, ensuring that individual projects will contribute to the overall public realm in a coherent manner.

Street trees provide numerous environmental and cultural benefits for citizens and visitors. The greatest of these is spatial definition of the street, which is created by the continuous and regular spacing of trees close to the curb. This results in an alteration of the scale of the street and a perceived reduction of street width. Visual cues and context of the street is improved. Street trees create a humanizing experience, informing us that a place is walkable and pedestrian friendly. Environmental benefits of trees include: (a) deciduous trees provide shade in summer and sun in winter, reducing heat islands and cooling the ambient temperature; (b) trees reduce sun glare from paving; and (c) precipitation falling on leaves, branches and bark is intercepted by trees and temporarily stored in the leaves, branches and bark, effectively reducing stormwater runoff. Cultural benefits include: (a) mature street trees can increase property values; (b) enclosure provided by street trees signals drivers to reduce speed. As the context of the street becomes more human, people naturally slow down; (c) produce oxygen and improve local air quality; and (d) tree canopies have a calming effect, reducing the perception of traffic noise.

Key

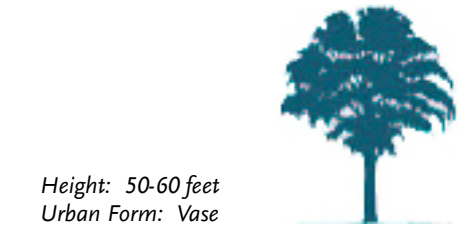
- | SCIENTIFIC NAME OF TREE |
|---|
| Cinnamomum camphora 'Camphor' |
| Cassia leptophylla 'Gold Medallion' |
| Geijera parviflora 'Australian Willow' |
| Gleditsia triacanthos 'Sunburst' |
| Gleditsia triacanthos 'Shademaster' |
| Koelreuteria paniculata 'Golden Rain' |
| Magnolia grandiflora 'Majestic Beauty TM' |
| Pinus canariensis 'Canary Island Pine' |
| Pistacia chinensis 'Chinese Pistache' |
| Platanus acerifolia 'Yarwood' |
| Pyrus calleryana 'Bradford' |
| Sophora japonica 'Japanese Pagoda' |
| Cercis canadensis 'Eastern Redbud' |
| Lophostemon confertus 'Brisbane Box' |
| Tabebuia impetiginosa 'Pink Trumpet' |
| Ficus (existing) |
| Uptown Specific Plan Area Boundary |



Cinnamomum Camphora

A. Cinnamomum camphora
Camphor Tree

This beautiful broad dome evergreen tree has glossy foliage that is light green in color. The new foliage comes in with a tinted red color. Eventually, this tree becomes quite large in size 50-60' tall and 60' wide. This excellent boulevard tree can create a full canopy over most streets. Provide ample 8 foot wide parkway for tree.



Height: 50-60 feet
Urban Form: Vase



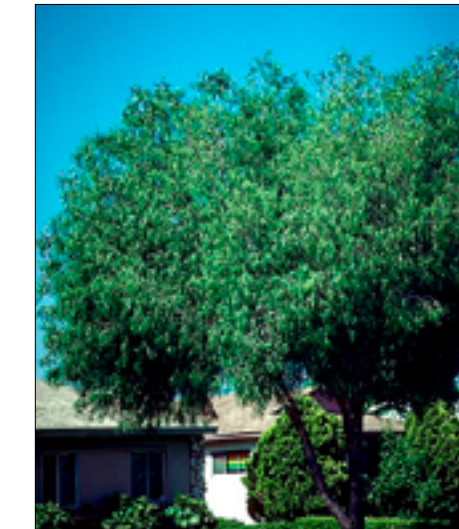
Cassia Leptophylla

B. Cassia leptophylla
Gold Medallion Tree

Gold Medallion Tree is an evergreen subtropical tree that reaches 30' tall and 35' wide, with glossy leaves and upright, 1' long clusters of large, bright yellow flowers. Its bloom period occurs in the summer. The plant should be grown in sun with average to little summer watering.



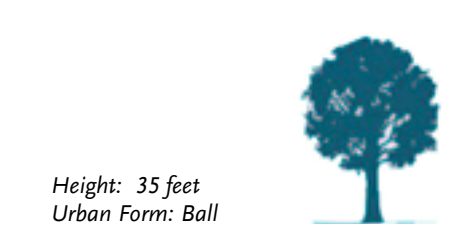
Height: 30 feet
Urban Form: Umbrella



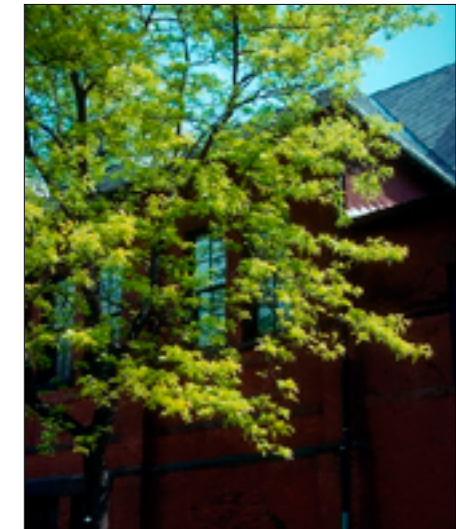
Geijera Parviflora

C. Geijera parviflora
Australian Willow

This evergreen tree reaches a height of 35' and 30' diameter with 3-6" long, medium green colored leaves that are narrow. Its main branches sweep up and out, while the smaller branches tend to hang down. The form of the leaves produces a weeping effect excellent for softening residential neighborhoods.



Height: 35 feet
Urban Form: Ball



Gleditsia Triacanthos Sunburst

D. Gleditsia triacanthos "Sunburst"
Sunburst Honey Locust

A deciduous tree reaching a height of 25'-40' with a 35'-40' spread. The golden yellow color of new foliage is characteristic of this variety. Its leaves turn green when they mature, which are showy against a dark background. It is a thornless and seedless variety.



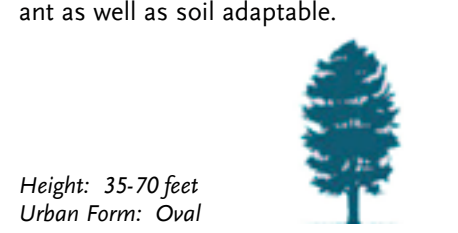
Height: 35-70 feet
Urban Form: Oval



Gleditsia Triacanthos Shademaster

E. Gleditsia triacanthos "Shademaster"
Shademaster Locust

A deciduous tree reaching a height of 25'-40' with a 25'-40' spread. Leaves pinnately compound and late leafers in spring. Light shade during summer months. Golden fall color. Leaf drop causes no litter. This is a thornless and seedless locust, which grows faster and in a more upright fashion. Soak twice monthly during the heat of summer in low desert. Drought tolerant as well as soil adaptable.



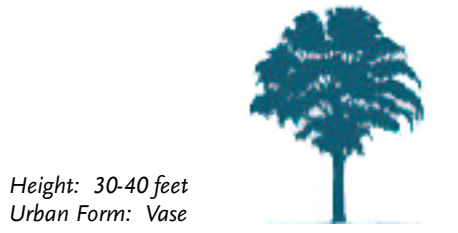
Height: 35-70 feet
Urban Form: Oval



Koelreuteria Paniculata

F. Koelreuteria paniculata
Golden Rain Tree

This is a medium-sized tree which produces lacy foliage and upright yellow flower clusters in the summer. It is tolerant of both urban conditions and various soil types. This is an excellent street tree for retail areas due to its open lacy nature. Tree size 30-40' tall with 35-40' spread.



Height: 30-40 feet
Urban Form: Vase



MP Magnolia Grandiflora



P Pinus Canariensis



PC Pistachia Chinensis



Pa Platanus Acerifolia



Py Pyrus Calleryana



SP Saphora Japonica



Co Cercis Canadensis



L Lophostemon confertus



Ta Tabebuia impetiginosa



F Ficus microcarpa 'Nitida'



Above: Neighborhoods in Whittier have a historic tradition of intensive tree planting along streets.

C. Magnolia grandiflora 'Majestic Beauty TM'
Southern Magnolia

This broad tree will reach about 40' tall with equal spread, its large, simple leathery appearance makes the pyramidal magnolia grandiflora perfect for either a street or lawn tree. Its leaves are 4-8" long, and its powerfully fragrant blooms are carried throughout the summer and fall. If these plants are grafted, they are more predictable. Restricted root areas or heavy soils will slow the growth process.



Height: 40 feet
Urban Form: Oval

H. Pinus canariensis
Canary Island Pine

This graceful, slender-growing pine has a pyramidal form to about 70'. Its needles are long and drooping in bundles of 3. The foliage is a blue-green color, maturing to a dark green shade.



Height: 70 feet
Urban Form: Pyramid

I. Pistachia chinensis
Chinese Pistache

The Pistacia chinensis is a deciduous tree with broad, spreading growth to 50' in height. Its leaves have 10-16 leaflets, and the fall coloring arrives in beautiful shades of red, orange and yellow. The young trees are often gawky, but some become shapely with age.



Height: 50 feet
Urban Form: Vase

J. Platanus acerifolia 'Yarwood'
London Plane Tree

This tree is 50' high x 40' wide and has a broad pyramidal to rounded shape. Its very large leaves show off fall colors of yellow and brown, and it has a very high resistance to powdery mildew.



Height: 50 feet
Urban Form: Pyramid

K. Pyrus calleryana 'Bradford'
Bradford Callery Pear

The 'Bradford' is a deciduous tree that grows to a size of 30-35' with equal spread. Profuse clusters of single white flowers are borne in the spring from noticeably sweeping branches. This is an excellent flowering tree for streets.



Height: 30-35 feet
Urban Form: Vase

L. Saphora japonica
Japanese Pagoda Tree

The Japanese Pagoda Tree is a deciduous tree that grows to 25' with a round head and green bark. In the late summer, lovely panicles of white flowers will be seen. This plant is a dependable, small shade tree and should be grown under sunny conditions.



Height: 25 feet
Urban Form: Ball

M. Cercis Canadensis
Eastern Redbud

This small, deciduous tree with a rounded head is covered with small flowers of a rose pink color in the spring before the appearance of heart-shaped leaves. Broad shaped tree reaching a height of 25 feet with a spread of 30-35 feet.



Height: 25-50 feet
Urban Form: Ball

N. Lophostemon confertus
Brisbane Box

This evergreen tree will grow 30-45' tall and 25' wide. It has leathery, glossy dark green leaves and inconspicuous white flowers in summer. The reddish brown, flaky bark resembles Eucalyptus, while the foliage resembles Ficus.



Height: 100 feet
Urban Form: Ball

O. Tabebuia impetiginosa
Pink Trumpet Tree

This slender-trunked tree will grow 25-50' high with 25-30' spread and produces beautiful purplish/pink blooms in spring. It does best in full sun and moist soil.



Height: 50-75 feet
Urban Form: Ball

O. Ficus microcarpa 'Nitida'
Indian Laurel Fig

Ficus microcarpa 'Nitida' reaches a height of 50'-75' with a spread of 50'-60'. The growth rate is fast and has a rounded, spreading or vase shaped urban form. The tree is evergreen with leaf litter continuously dropping though out the year. This plant tolerates drought, occasional wetness and some salt. Suitable soil is well-drained/loamy, sandy or clay.



Height: 50-75 feet
Urban Form: Ball



Above: Street trees of the same species not only provide aesthetic pleasure and shade in the California sun, they also serve one of the catalytic strategies of this Specific Plan by creating a sense of identity, for example as distinctive street edges to the Uptown area.